

# Hays County Well Workshop

Jenna Walker, MAGEo

Interim Director of Watershed Services

April 19, 2023



**THE MEADOWS CENTER**  
FOR WATER AND THE ENVIRONMENT  

---

TEXAS STATE UNIVERSITY

# OUR MISSION

Inspiring research and leadership that ensures clean, abundant water for the environment and all humanity.



RESEARCH



EDUCATION

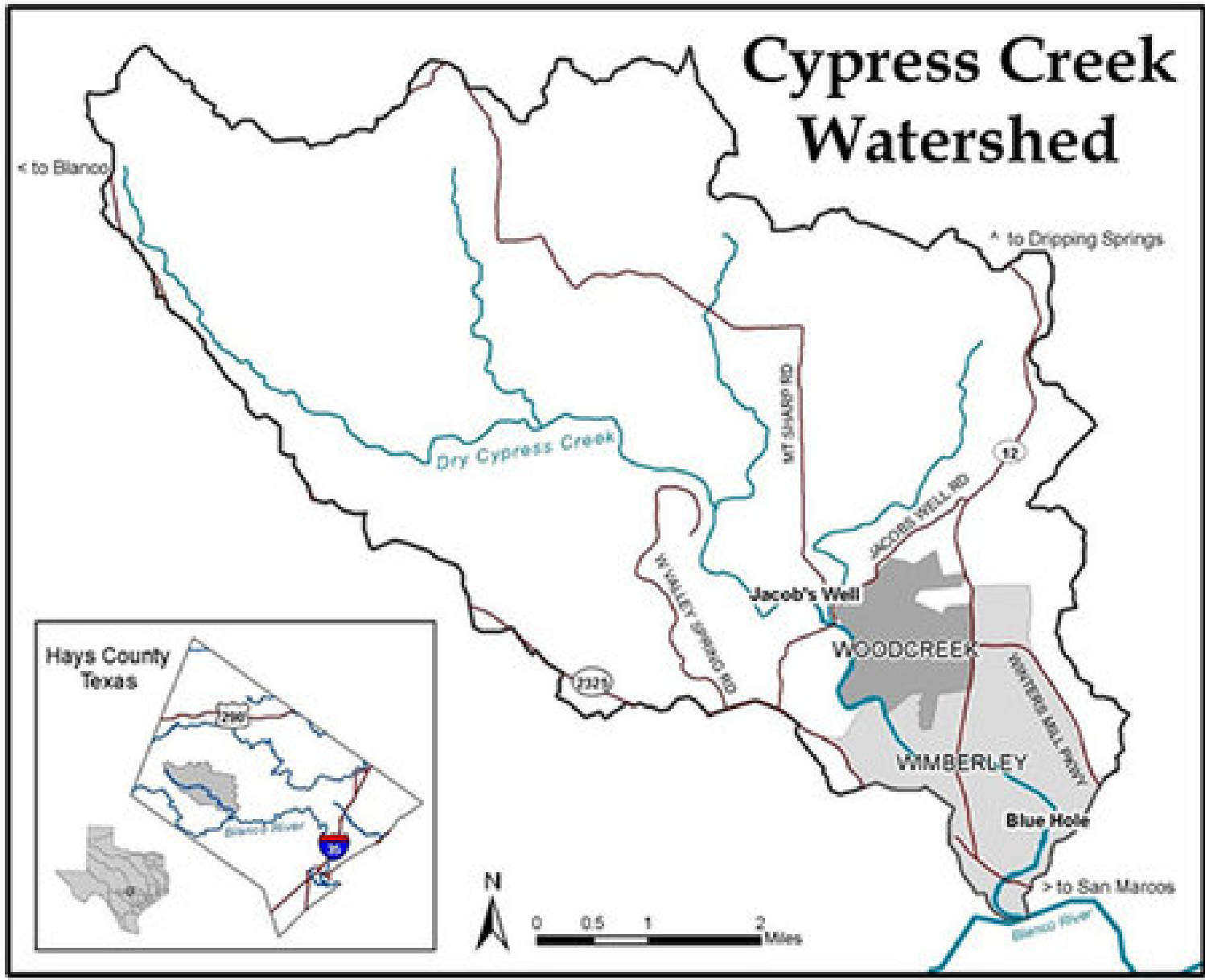


STEWARDSHIP



LEADERSHIP





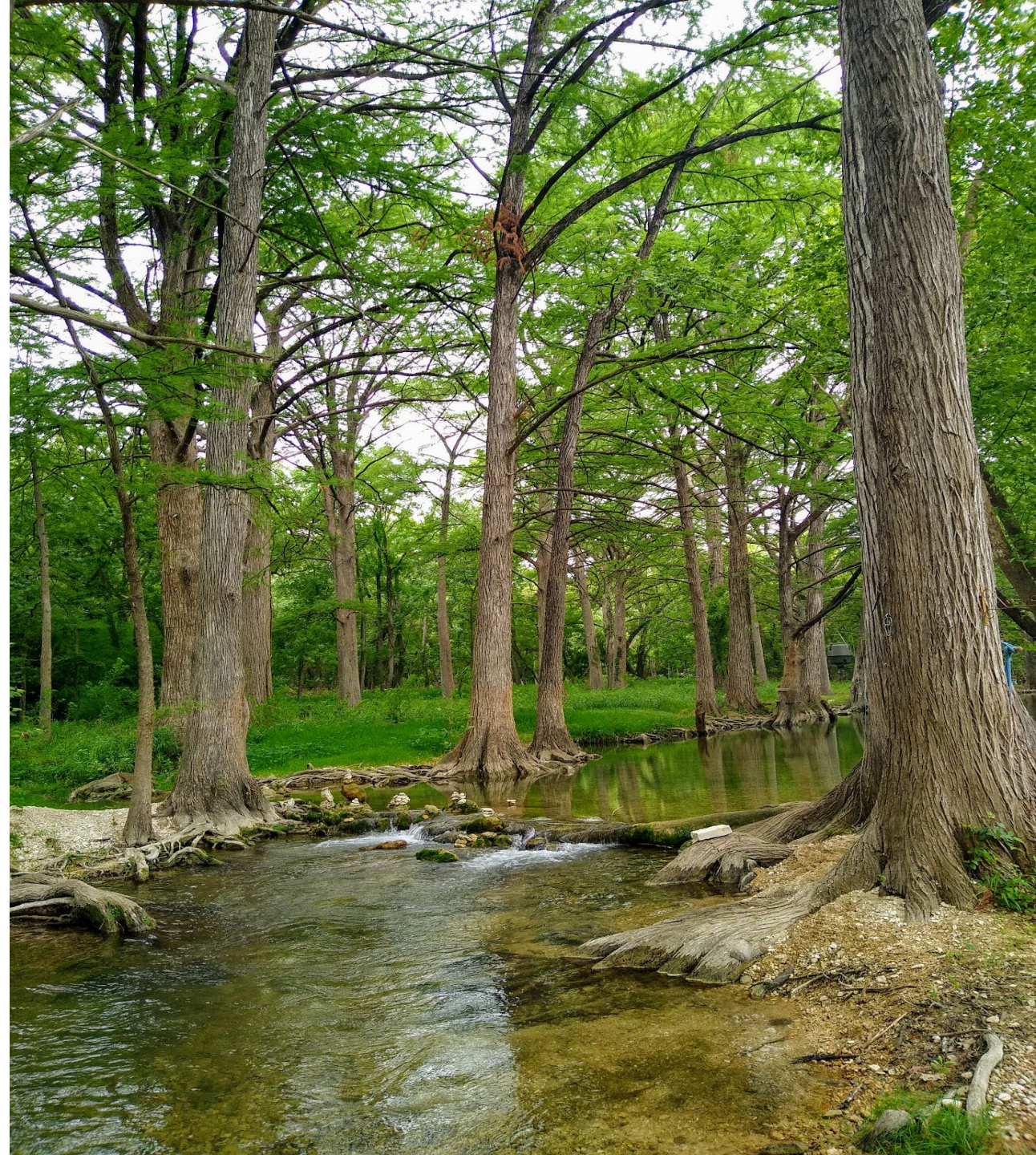
# Clean Water Act 319 Funding

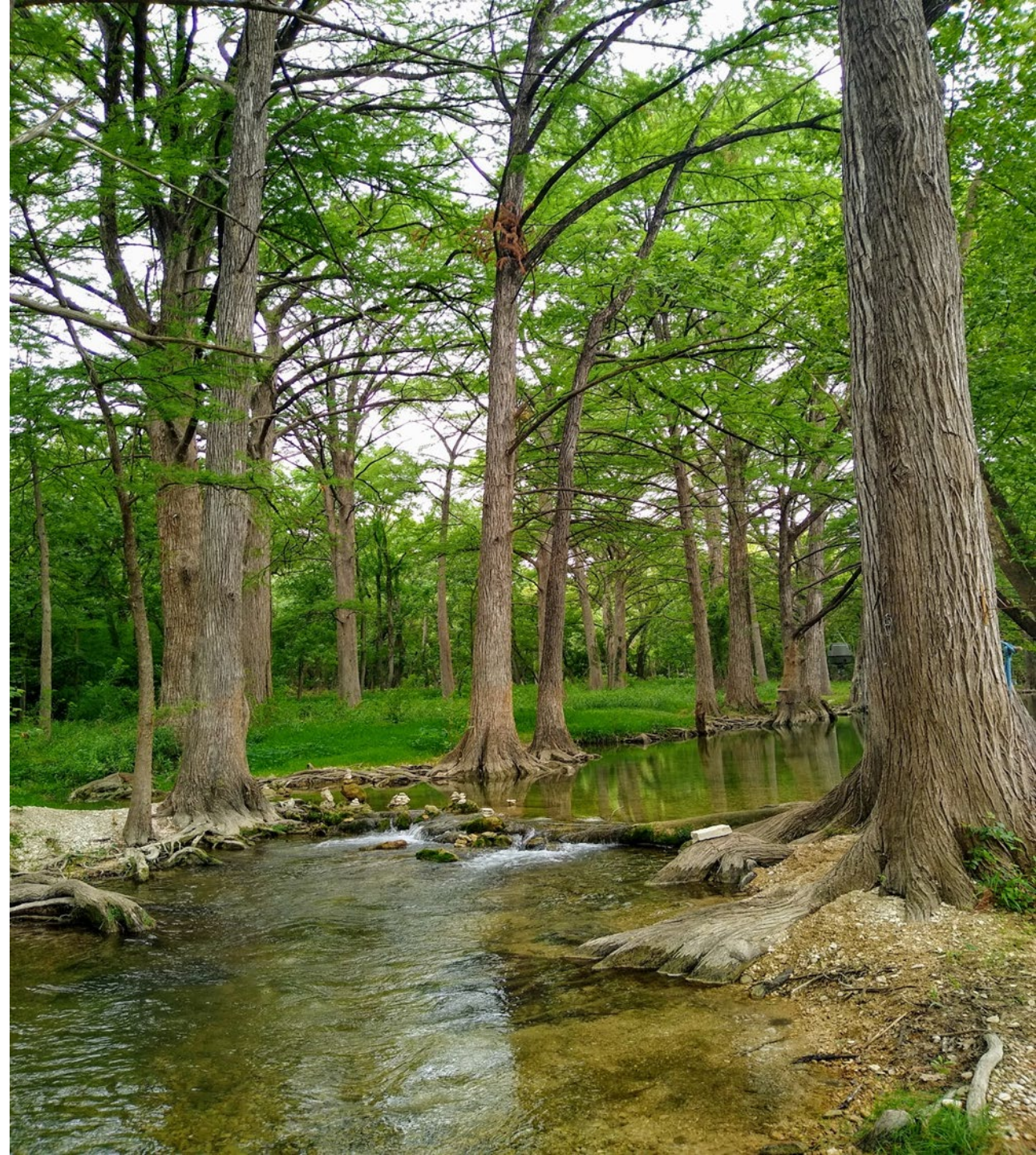
## Cypress Creek Watershed Protection Plan



# PURPOSE

Cypress Creek Watershed Protection Plan aims to ensure that the long-term integrity and sustainability of the Cypress Creek watershed is preserved and that water quality standards are maintained for present and future generations.





The screenshot displays the website's interface. At the top left is the Cypress Creek logo with the tagline "Let's keep it... clean & flowing". The navigation menu includes links for HOME, ABOUT, WATER QUALITY, RESOURCES, CALENDAR, and a highlighted button for WATERSHED PROTECTION PLAN. The main content area features the heading "PRESERVING THE NATURAL BEAUTY AND WATER QUALITY OF CYPRESS CREEK FOR GENERATIONS TO COME" in orange text. Below this is a satellite map titled "Maps of the Cypress Creek Watershed" showing the watershed boundary and sub-watersheds: Mill Spring Run, Jacob's Well, Woodcreek, and Mill Creek. The map includes road markers for 2325 and 12. Below the map is an "EVENTS" section with three image thumbnails: a river flowing through a forest, a stack of documents, and a person fishing in a stream.

# Cypress Creek Water Quality Monitoring

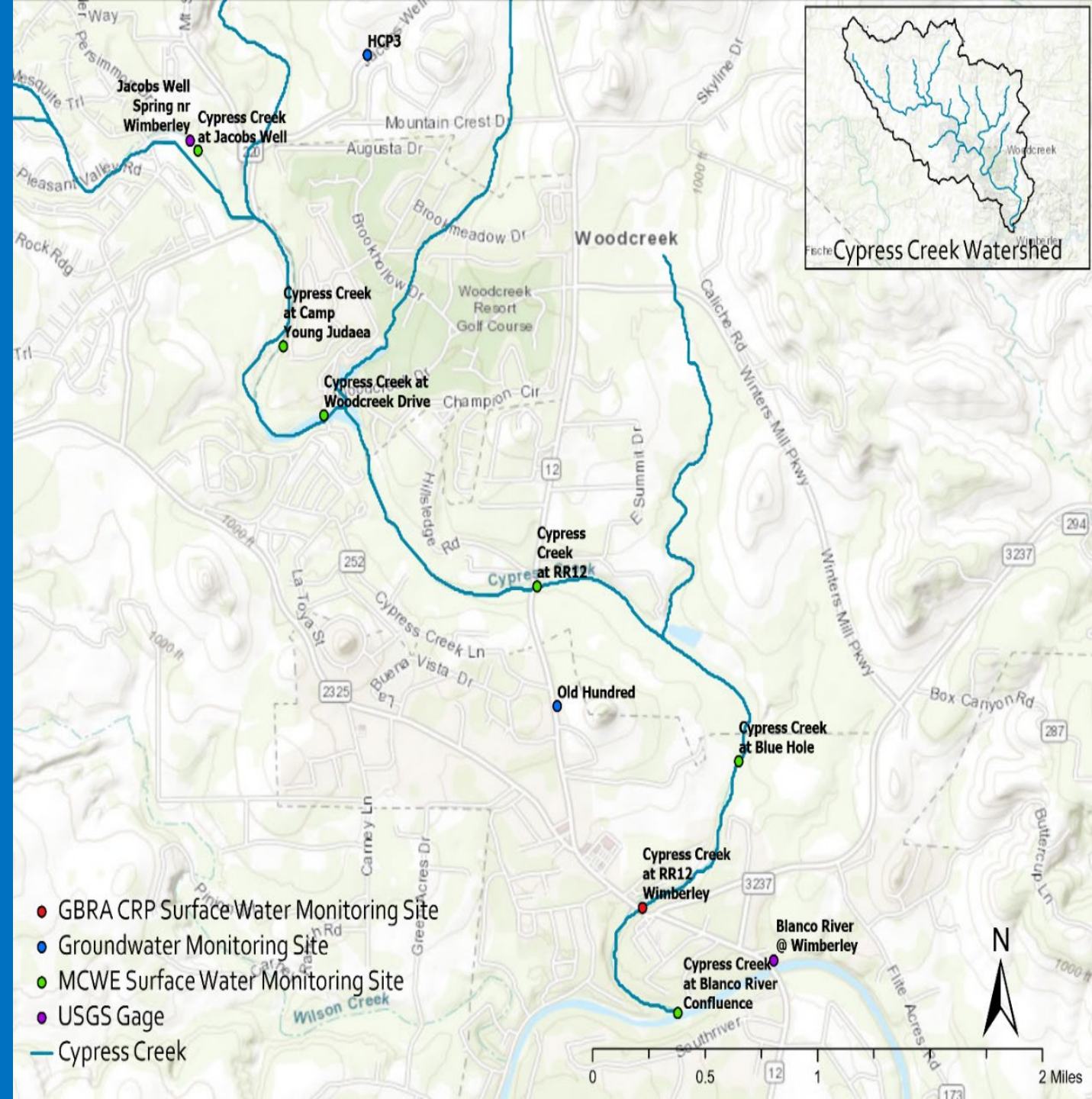
Purpose: To collect water quality data in support of the WPP

Six surface water sites:

- 12677 – CC @ Jacob's Well
- 22109 – CC @ Camp Young Judea
- 22110 – CC @ Woodcreek Dr.
- 12676 – CC @ RR12 Cottages
- 12675 – CC @ Blue Hole\*
- 12674 – CC @ RR12 in Wimberley
- 12673 – CC @ Blanco Riv. Confluence\*

Two groundwater well sites:

- HCP3
- Old Hundred





# Cypress Creek

## Biannual Groundwater Monitoring (August 2019 - January 2021)

Well	Date	Temp. (°C)	DO (mg/L)	Cond. (µS/cm)	pH (s.u.)	TSS (mg/L)
HCP3	8/22/2019	22.4	3.7	690	7	4.1
HCP3	11/5/2019	22.4	3.9	666	7	<0.5
HCP3	1/23/2020	12.4	9.5	588	8	<0.5
HCP3	7/21/2020	31.6	6.7	609	7.7	<1
HCP3	1/27/2021	16.9	7.5	598	7.4	<1
Old Hundred	11/5/2019	24.4	2.6	677	7.2	<0.5
Old Hundred	1/23/2020	24.0	3.4	673	7.4	<0.5
Old Hundred	7/21/2020	24.7	2.9	719	7.2	<1
Old Hundred	1/27/2021	24.3	1.6	720	7.2	<1

# Cypress Creek

## Biannual Groundwater Monitoring (August 2019 - January 2021)

Well	Date	E. Coli (MPN/100 mL)	Ammonia (mg/L)	Total P (mg/L)	Nitrate (mg/L)
HCP3	8/22/2019	<1	<0.1	<0.02	1.08
HCP3	11/5/2019	<2	<0.1	<0.02	1.09
HCP3	1/23/2020	<1	<0.1	<0.02	0.98
HCP3	7/21/2020	<1	<0.2	<0.02	1.34
HCP3	1/27/2021	<1	<0.02	<0.02	0.762
Old Hundred	11/5/2019	<1	<0.1	<0.02	<0.05
Old Hundred	1/23/2020	<2	<0.1	<0.02	<0.05
Old Hundred	7/21/2020	<1	<0.2	<0.02	<0.02
Old Hundred	1/27/2021	<1	<0.02	<0.02	<0.01

An aerial photograph of a river winding through a lush, green forest. A white pontoon boat is visible on the right side of the river. The image is overlaid with a semi-transparent dark blue filter.

# Contact

Jenna Walker, MAGEo  
Interim Director, Watershed Services  
[jjwalker@txstate.edu](mailto:jjwalker@txstate.edu)  
(512) 245-9148