



Pristine Streams Stakeholder Meeting

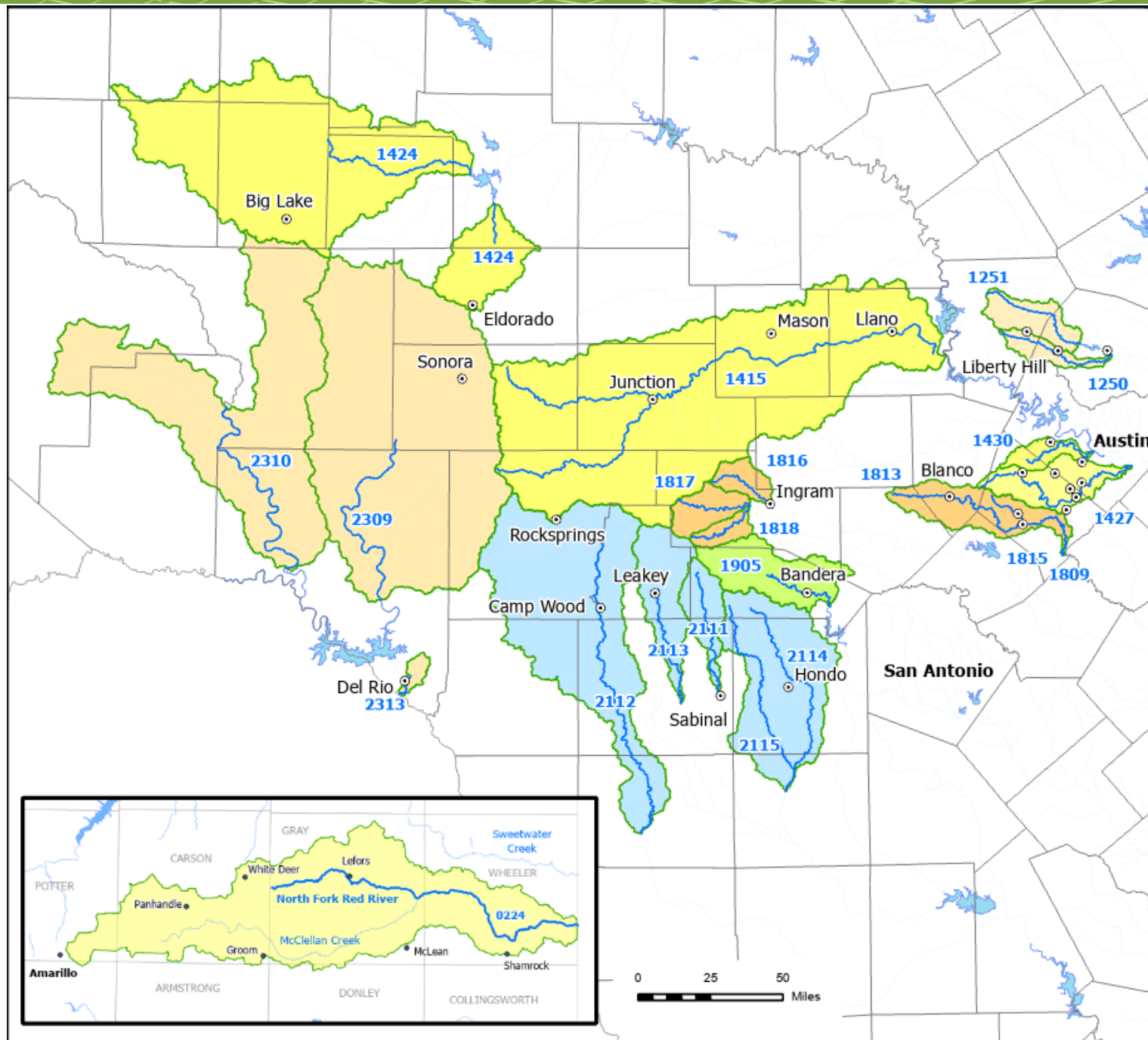
August 31, 2022

Pristine/Nutrient Sensitive Streams

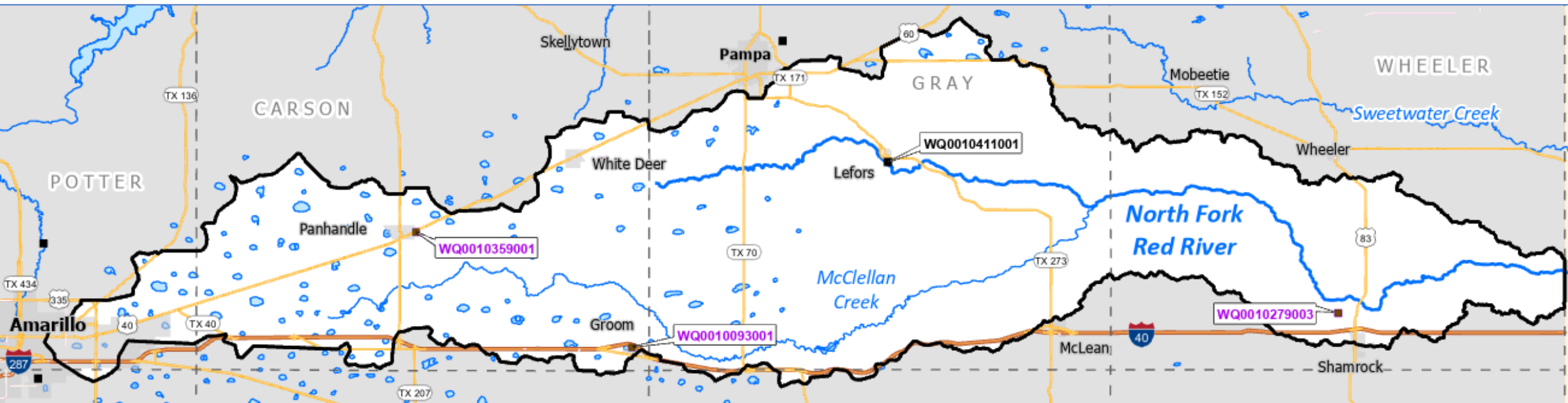
Streams in Pristine Streams Rule Petition

- 22 classified river segments, and their watersheds, identified in the rule petition
 - based on criterion of having $\geq 90\%$ of monitoring data over 10-year period with total phosphorus (TP) below 0.06 mg/L
 - clear, low-nutrient, rocky-bottom streams
 - sensitive to nutrient inputs
- review of segments/watersheds
 - location
 - characteristics
 - existing domestic wastewater permits

Basin	Watershed	Segment ID and Name	
Red River	North Fork Red River Watershed	0224	North Fork Red River
Brazos River	Forks of the San Gabriel River Watershed	1250	South Fork San Gabriel River
		1251	North Fork San Gabriel River
Colorado River	Llano River Watershed	1415	Llano River
	Concho River Tributaries Watershed	1424	Middle Concho/South Concho River
	Onion Creek Watershed	1427	Onion Creek
	Barton Creek Watershed	1430	Barton Creek
Guadalupe River	Blanco River Watershed	1809	Lower Blanco River
		1813	Upper Blanco River
		1815	Cypress Creek
	Upper Guadalupe River Tributaries Watershed	1816	Johnson Creek
		1817	North Fork Guadalupe River
		1818	South Fork Guadalupe River
San Antonio River	Medina River above Medina Lake Watershed	1905	Medina River above Medina Lake
Nueces River	Upper Nueces River Watershed	2112	Upper Nueces River
	Frio River Tributaries Watershed	2111	Upper Sabinal River
		2113	Upper Frio River
		2114	Hondo Creek
		2115	Seco Creek
Rio Grande	Middle Rio Grande Tributaries	2309	Devils River
		2310	Lower Pecos River
		2313	San Felipe Creek



Map of Segment 0224 Watershed

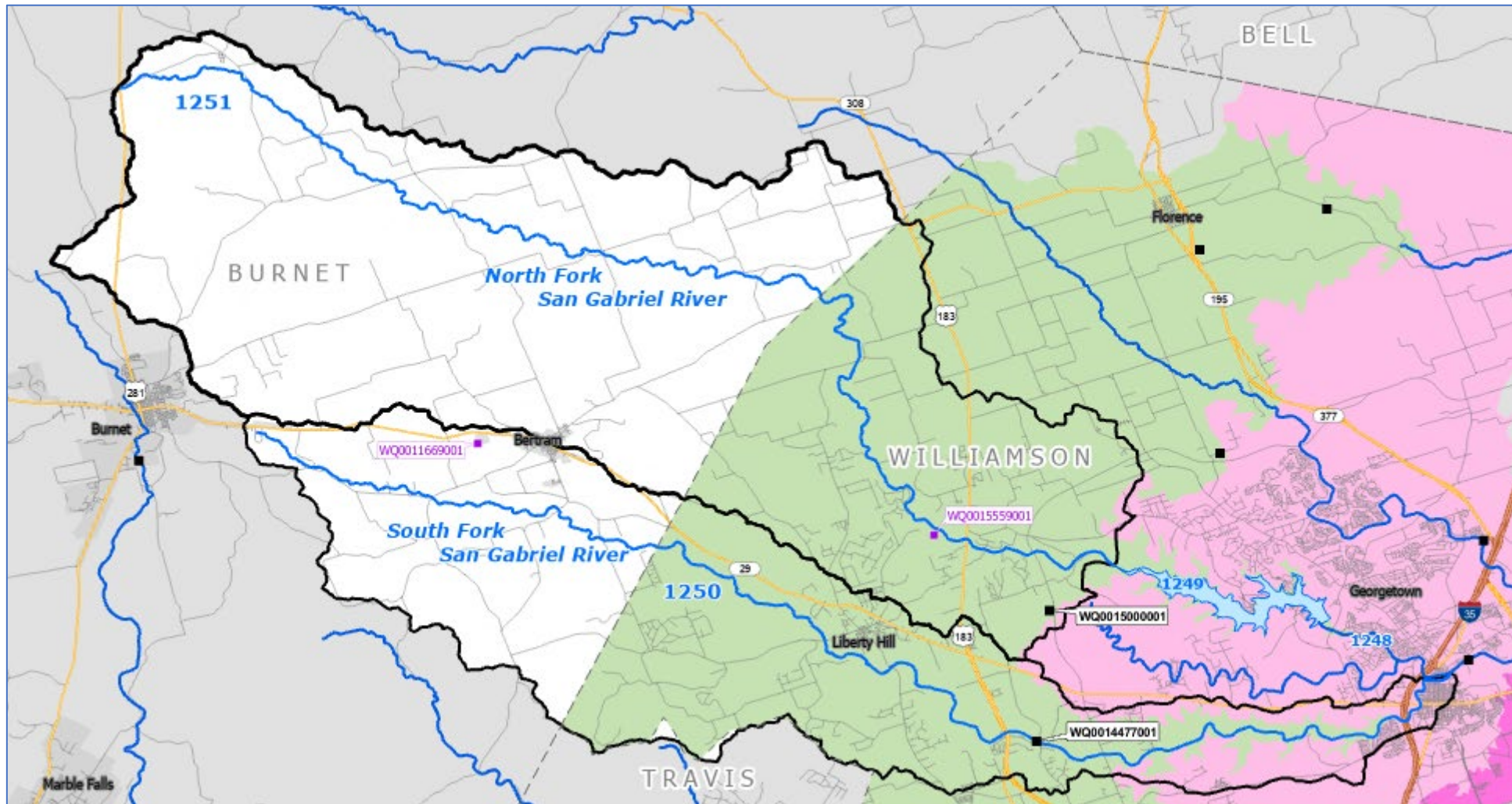


North Fork Red River Watershed: Segment 0224

Classified Segment ID, Name, Description		Aquatic Life Use	Permit Holder	Permit Number	Disposal Method	Nutrient Limits
0224	North Fork Red River - from the Oklahoma State Line in Wheeler County to a point 4.0 km (2.5 mi) upstream of FM 2300 in Gray County	High	City of Panhandle	WQ0010359001	No Discharge	-
			City of Groom	WQ0010093001	No Discharge	-
			City of Lefors	WQ0010411001	Discharge	No
			City of Shamrock	WQ0010279003	No Discharge	-



Map of Segment 1250 and 1251 Watersheds

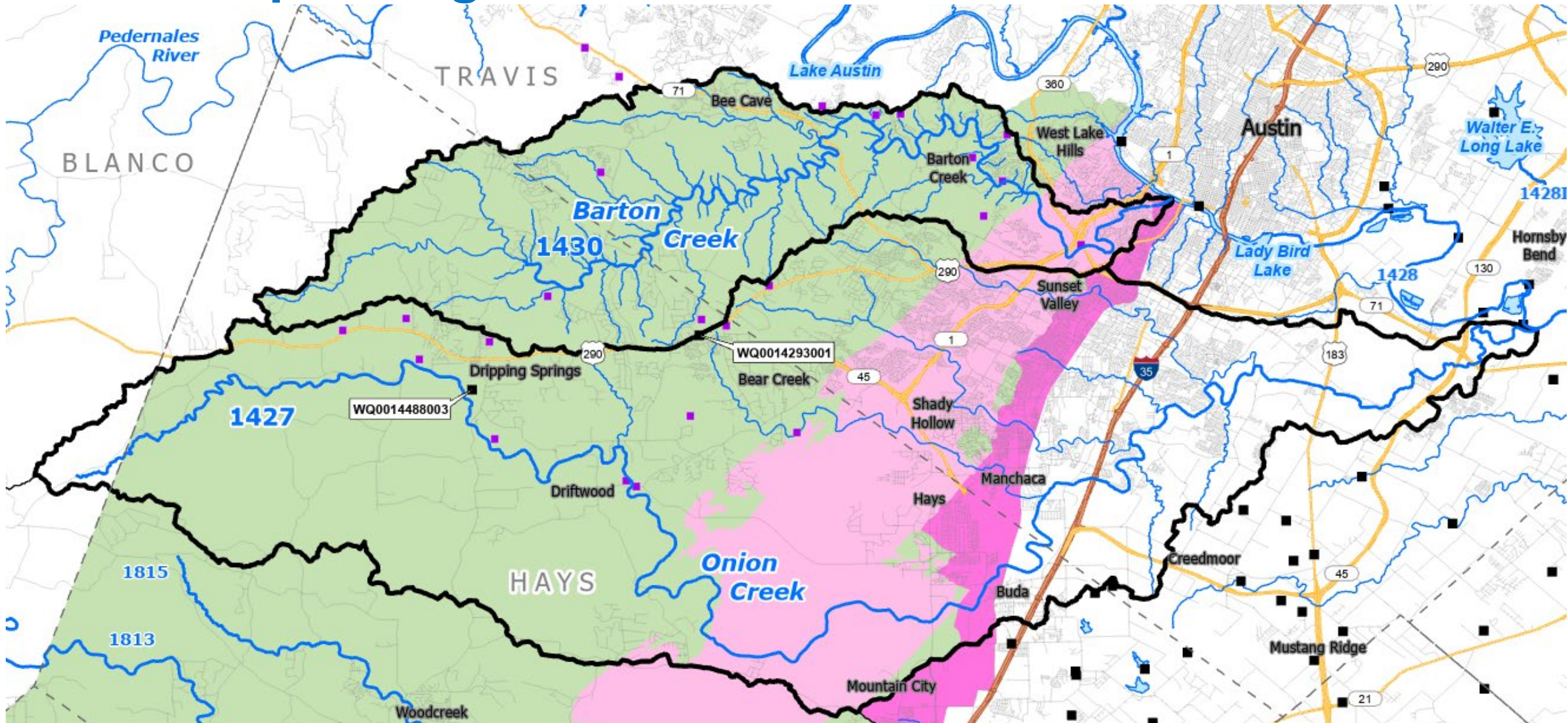


Forks of the San Gabriel River, Segments 1250 and 1251

Classified Segment ID, Name, Description		Aquatic Life Use	Aquifer Protection	Permit Holder	Permit Number	Disposal Method	Nutrient Limits
1250	South Fork San Gabriel River - from the confluence with the North Fork San Gabriel River in Williamson County to the most upstream crossing of SH 29 in Burnet County	High	Edwards Aquifer	City of Liberty Hill (Regional WWTP)	WQ0014477001	Discharge	Yes
				City of Bertram	WQ0011669001	No Discharge	-
1251	North Fork San Gabriel River - from a point 6.6 km (4.1 mi) downstream of US 183 in Williamson County to the confluence of Allen Branch in Burnet County	High	Edwards Aquifer	City of Liberty Hill (Santa Rita WWTP)	WQ0015000001	Discharge	Yes
				River Oaks Land Partners	WQ0015559001	No Discharge	-



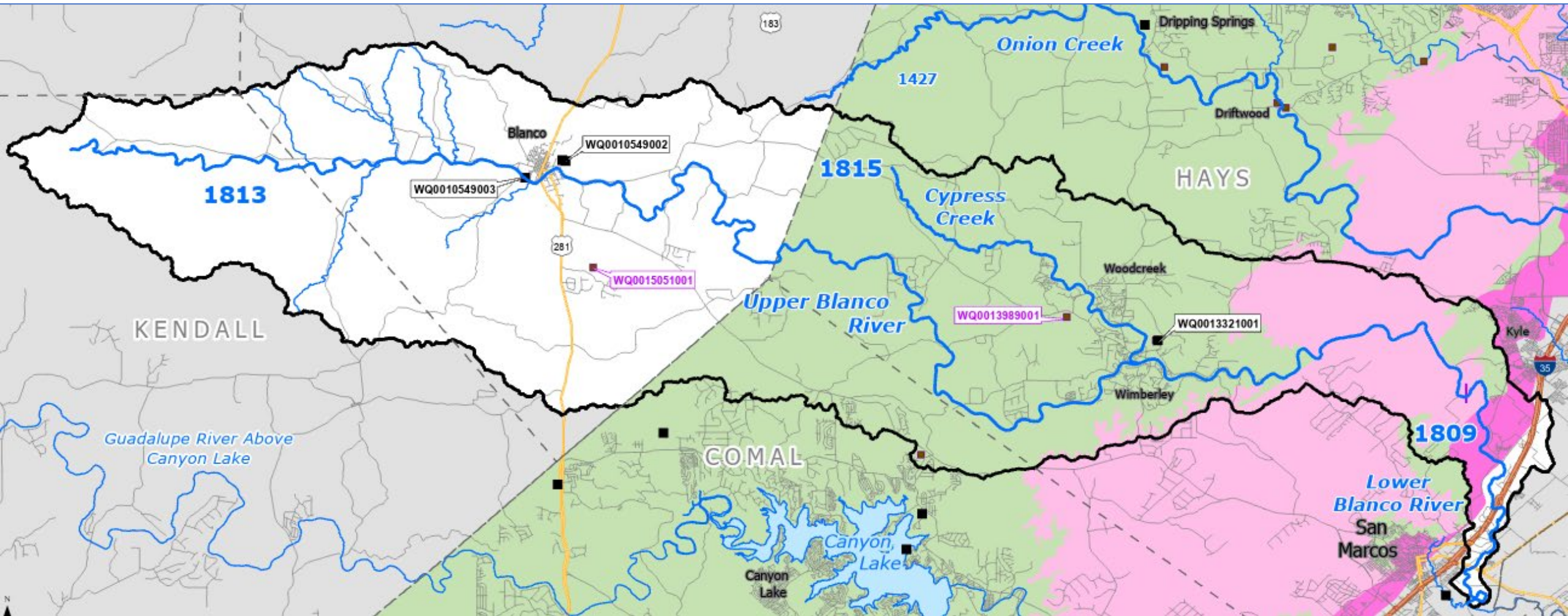
Map of Segments 1427 and 1430 Watersheds



Onion Creek and Barton Creek, Segments 1427 and 1430

Classified Segment ID, Name, Description		Aquatic Life Use	Watershed Protection	Aquifer Protection	Permit Holder	Permit Number	Disposal Method	Nutrient Limits
1427	Onion Creek - from the confluence with the Colorado River in Travis County to the most upstream crossing of FM 165 in Blanco County	High	Colorado River	Edwards Aquifer	City of Dripping Springs	Various (2)	No Discharge	-
						WQ0014488003	Discharge	Yes
					Various (9)	Various (9)	No Discharge	-
					Hays County WCID No. 1	WQ0014293001	Discharge	Yes
1430	Barton Creek - from the confluence with Lady Bird Lake in Travis County to FM 12 in Hays County	High	-	Edwards Aquifer	Various (14)	Various (14)	No Discharge	-

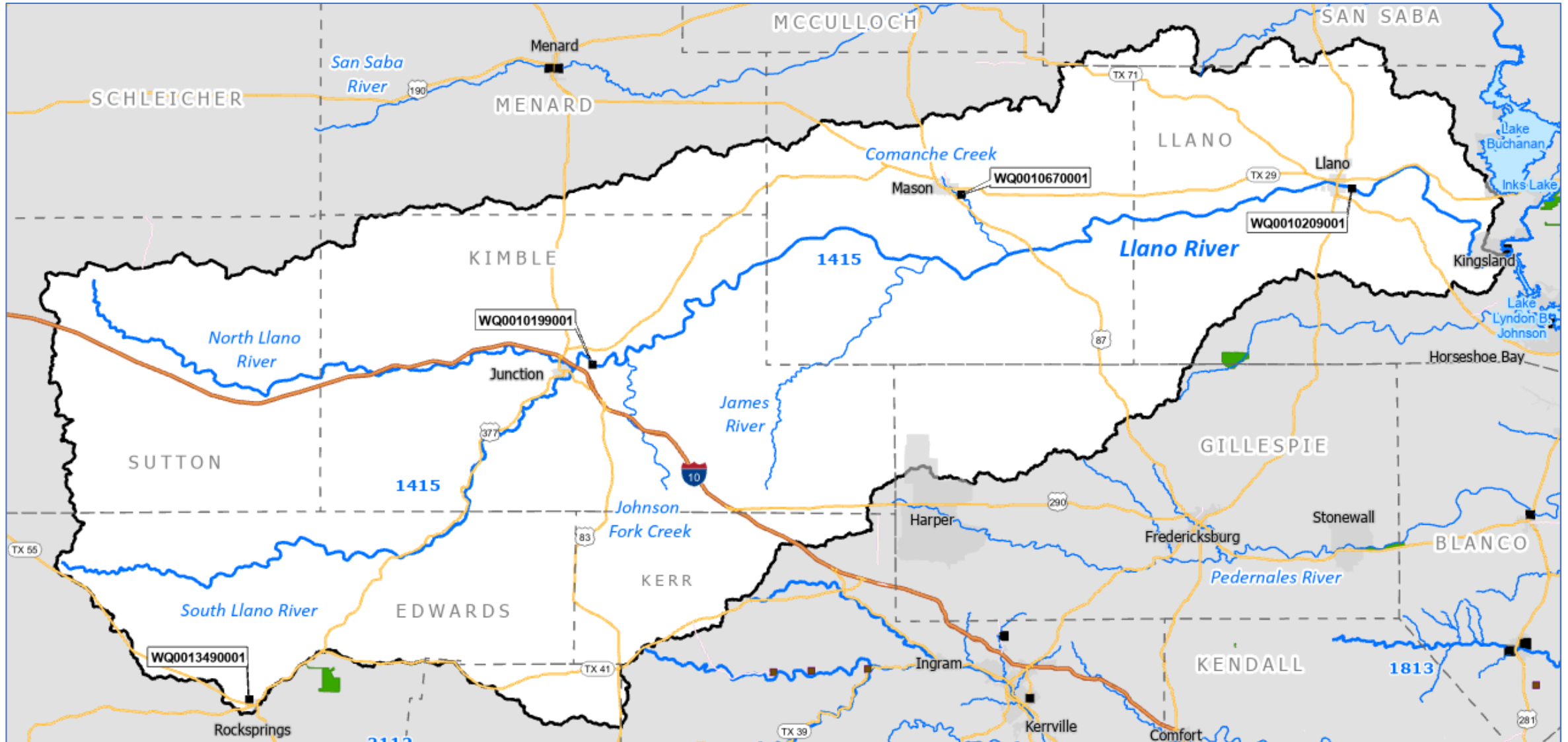
Map of Segments 1809, 1813, and 1815 Watersheds



Blanco River Watershed: Segments 1809, 1813, 1815

Classified Segment ID, Name, Description		Aquatic Life Use	Aquifer Protection	Permit Holder	Permit Number	Disposal Method	Nutrient Limits
1809	Lower Blanco River - from the confluence with the San Marcos River in Hays County to a point 0.3 km (0.2 mi) upstream of Limekiln Road in Hays County	High	Edwards Aquifer	-	-	-	-
1813	Upper Blanco River - from a point 0.3 km (0.2 mi) upstream of Limekiln Road in Hays County to the confluence of Meier Creek in Kendall County	Exceptional	Edwards Aquifer	City of Wimberley	WQ0013321001	Discharge	Yes
				Rancho Del Lago, Inc.	WQ0015051001	No Discharge	-
				City of Blanco	WQ0010549002	Discharge	No
				City of Blanco Water Treatment Plant	WQ0010549003	Discharge	-
1815	Cypress Creek - from the confluence with the Blanco River in Hays County to a point 6.4 km (4.0 mi) upstream of the most upstream unnamed county road crossing in Hays County	Exceptional	Edwards Aquifer	Aqua Texas, Inc.	WQ0013989001	No Discharge	-

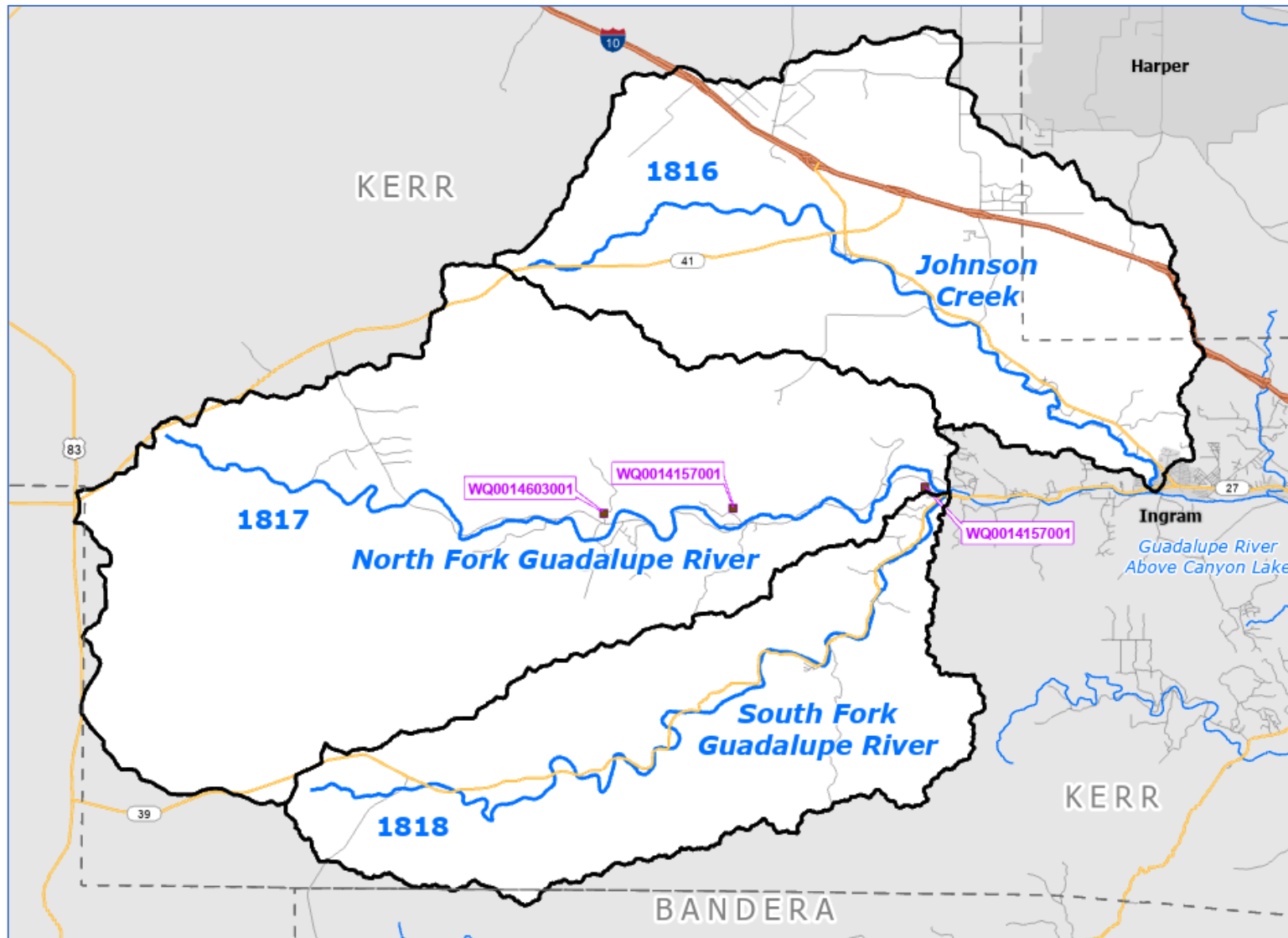
Map of Segment 1415 Watershed



Llano River Watershed: Segment 1415

Classified Segment ID, Name, Description		Aquatic Life Use	Permit Holder	Permit Number	Disposal Method	Nutrient Limits
1415	Llano River - from a point immediately upstream of the confluence of Honey Creek in Llano County to FM 864 on the North Llano River in Sutton Co. and to SH 55 on the South Llano River in Edwards Co.	High	City of Rocksprings	WQ0013490001	Discharge	No
			City of Junction	WQ0010199001	Discharge	M/R
			City of Mason	WQ0010670001	Discharge	No
			City of Llano	WQ0010209001	Discharge	Yes

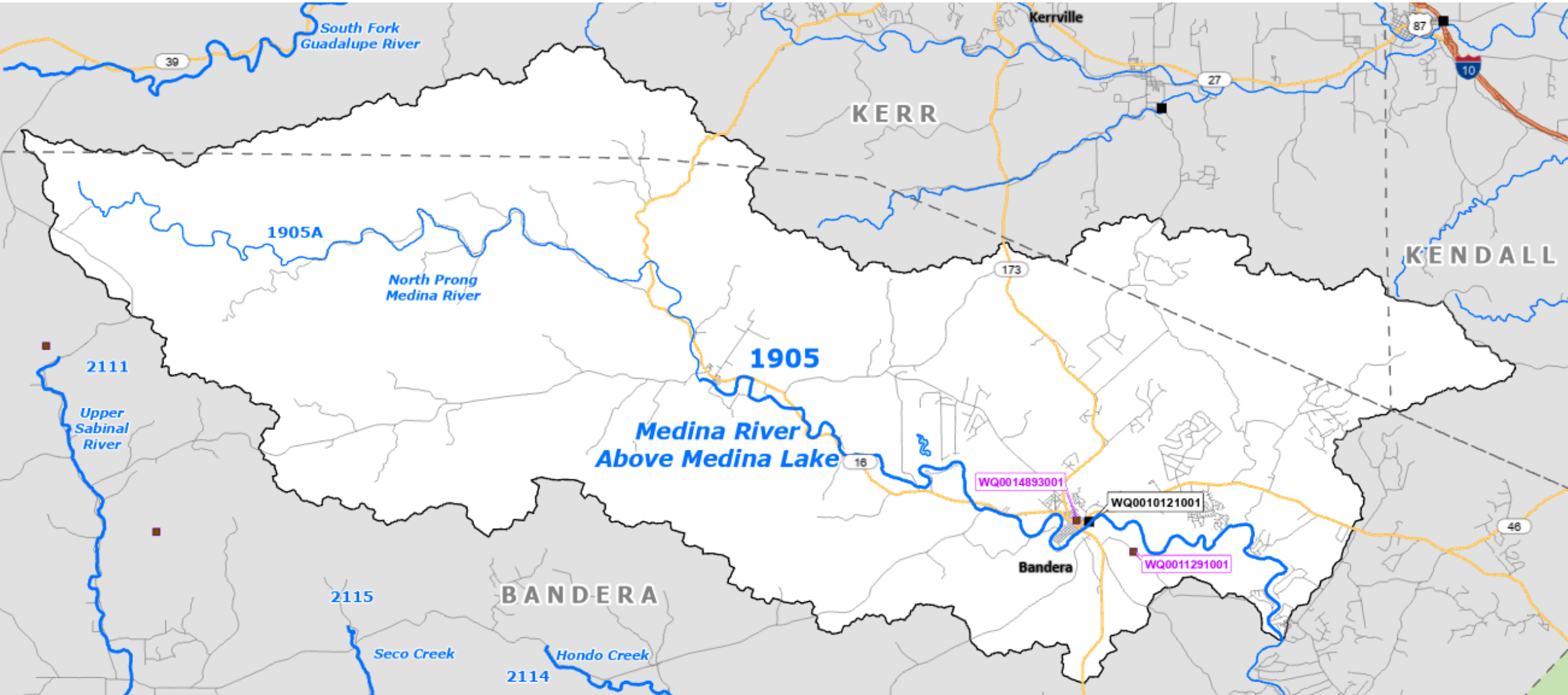
Map of Segments 1816, 1817, and 1818 Watersheds



Guadalupe River Tributaries, Segments 1816, 1817, 1818

Classified Segment ID, Name, Description		Aquatic Life Use	Permit Holder	Permit Number	Disposal Method
1816	Johnson Creek - from the confluence with the Guadalupe River in Kerr Co. to a point 0.7 mi upstream of the most upstream crossing of SH 41 in Kerr Co.	Exceptional	-	-	-
1817	North Fork Guadalupe River - from the confluence with the Guadalupe River in Kerr Co. to a point 11.3 mi upstream of Boneyard Draw in Kerr Co.	Exceptional	Presbyterian Mo-Ranch Assembly	WQ0014603001	No Discharge
			Boys Scouts of America	WQ0014157001	No Discharge
			Cherry Springs Investments	WQ0014541001	No Discharge
1818	South Fork Guadalupe River - from the confluence with the Guadalupe River in Kerr Co. to a point 3.0 mi upstream of FM 187 in Kerr Co.	Exceptional	-	-	-

Map of Segment 1905 Watershed

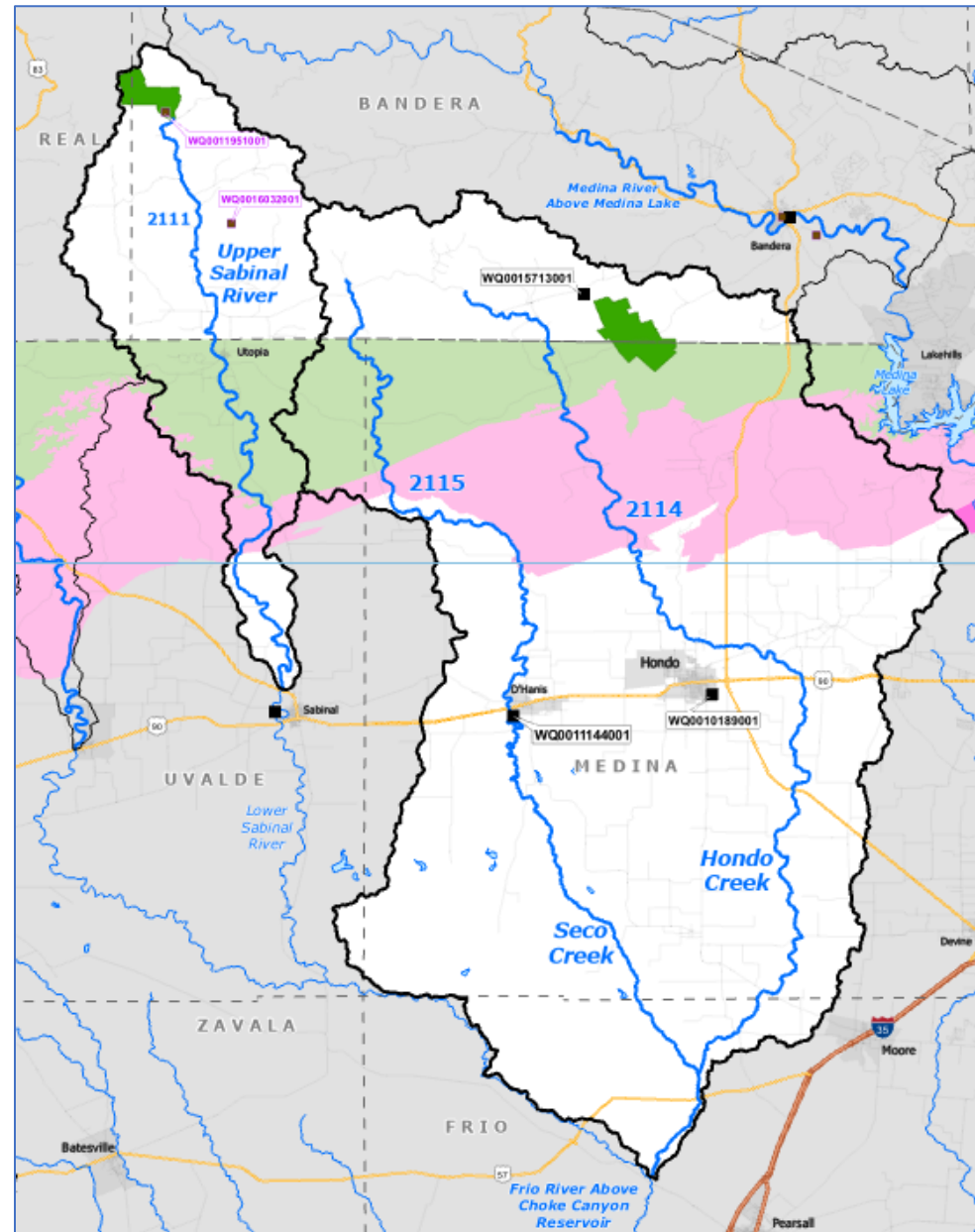


Medina River Above Medina Lake Watershed: Segment 1905

Classified Segment ID, Name, Description		Aquatic Life Use	Permit Holder	Permit Number	Disposal Method	Nutrient Limits
1905	Medina River Above Medina Lake - from a point immediately upstream of the confluence of Red Bluff Creek in Bandera County to the confluence of the North Prong Medina River and the West Prong Medina River in Bandera County	Exceptional	City of Bandera	WQ0010121001	Discharge	No
			Bandera County (Justice Center WWTP)	WQ0014839001	No Discharge	-
			Flying L Public Utility District	WQ0011291001	No Discharge	-



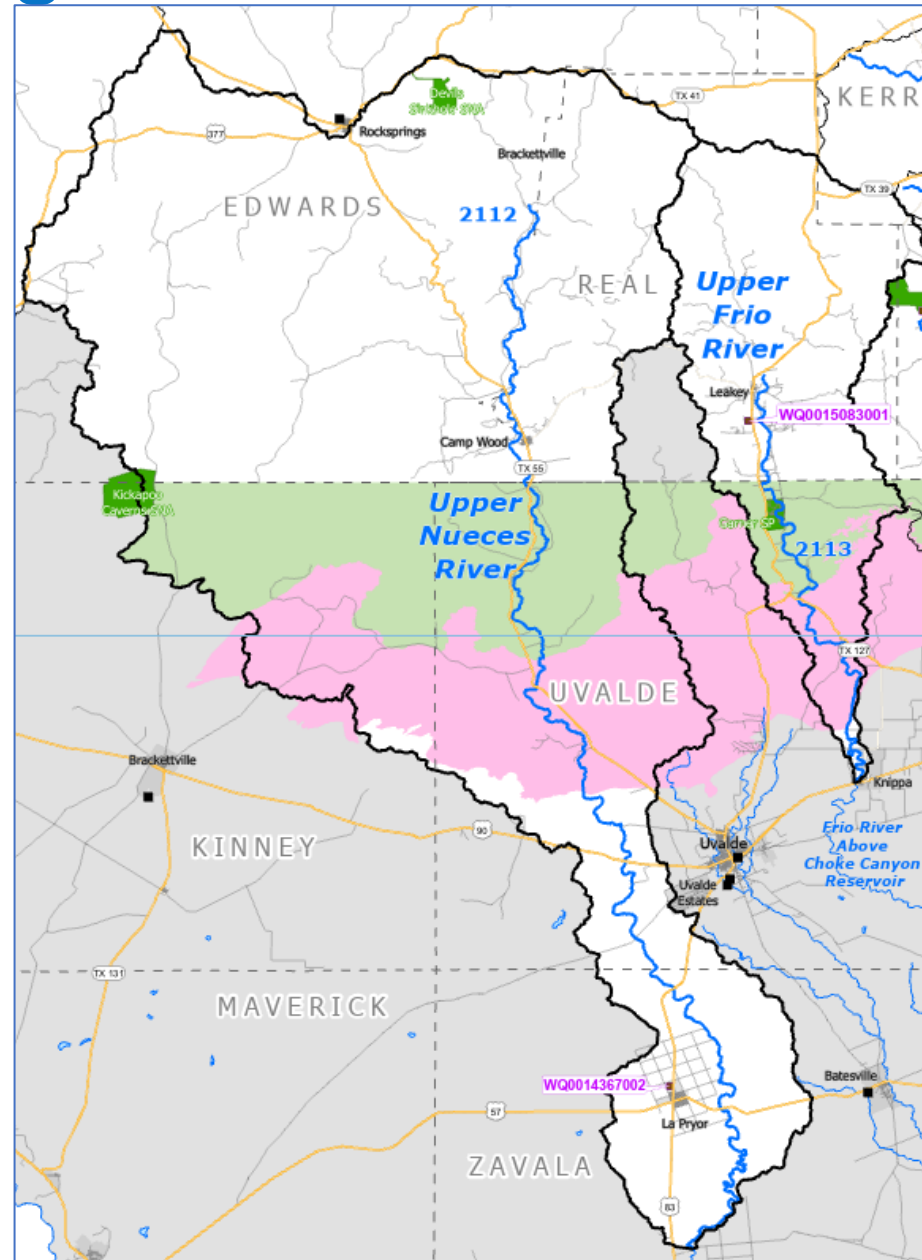
Map of Segments 2111, 2114, and 2115 Watersheds



Upper Sabinal River, Hondo Creek, Seco Creek Watersheds: Segments 2111, 2114, 2115

Classified Segment ID, Name, Description		Aquatic Life Use	Aquifer Protection	Permit Holder	Permit Number	Disposal Method	Nutrient Limits
2111	Upper Sabinal River - from a point 100 meters (110 yards) upstream of SH 127 in Uvalde County to the most upstream crossing of FM 187 in Bandera County	High	Edwards Aquifer	Texas Parks & Wildlife (Lost Maples SNA WWTP)	WQ0011951001	No Discharge	-
				Young Life (Lonehollow Ranch WWTP)	WQ0016032001	No Discharge	-
2114	Hondo Creek - from the confluence with the Frio River in Frio County to FM 470 in Bandera County	High	Edwards Aquifer	RR 417, LLC	WQ0015713001	Discharge*	Yes
				City of Hondo	WQ0010189001	Discharge	No
2115	Seco Creek - from the confluence with Hondo Creek in Frio County to the confluence of West Seco Creek in Bandera County	High	Edwards Aquifer	Medina County Water Control & Improvement District No. 2	WQ0011144001	Discharge	No

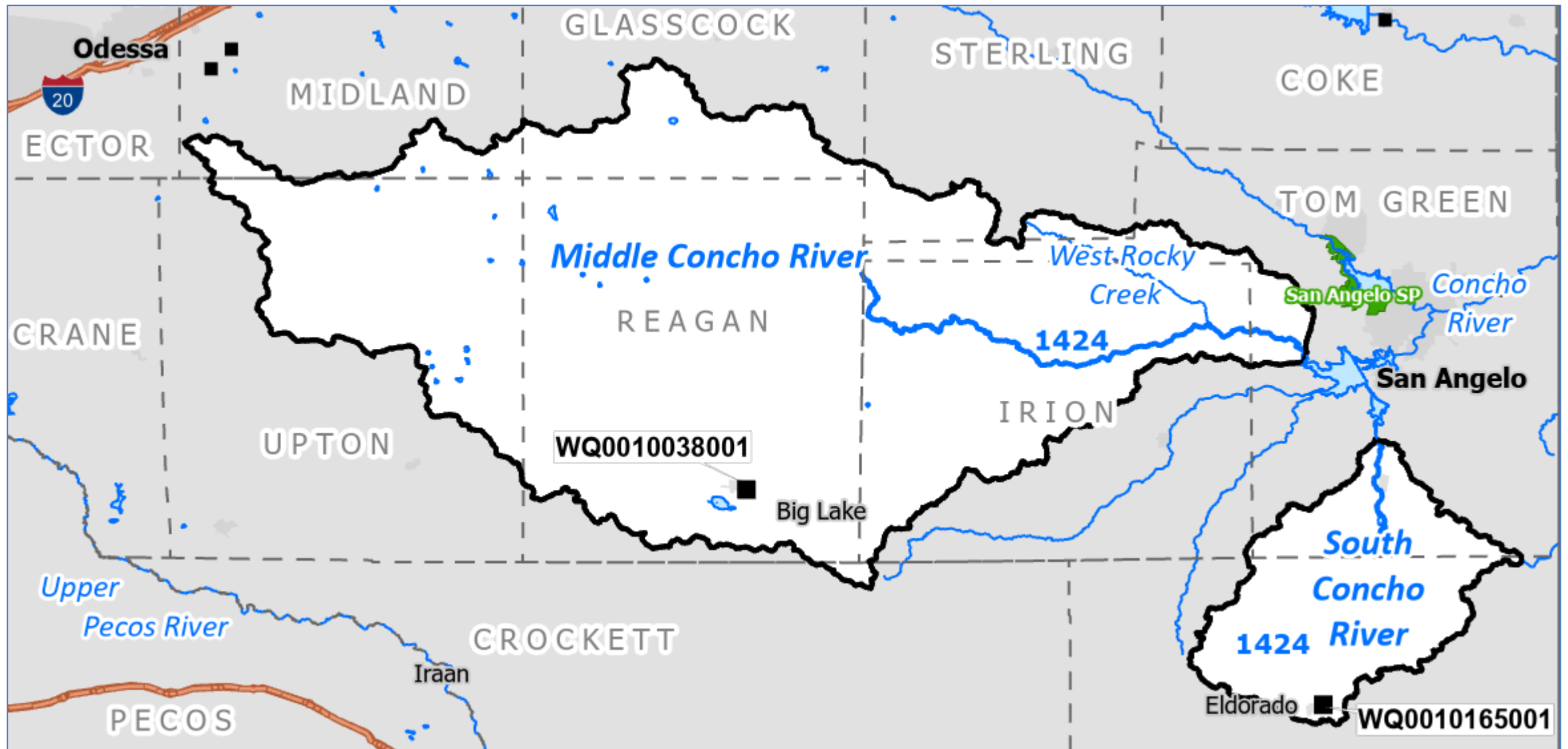
Map of Segments 2112 and 2113 Watersheds



Upper Nueces River and Upper Frio River Watersheds: Segments 2112, 2113

Classified Segment ID, Name, Description		Aquatic Life Use	Aquifer Protection	Permit Holder	Permit Number	Disposal Method	Nutrient Limits
2112	Upper Nueces River - from a point 100 meters (110 yards) upstream of FM 1025 in Zavala County to the confluence of the East Prong Nueces River and Hackberry Creek in Edwards County	High	Edwards Aquifer	Zavala County WCID 1 (La Pryor WWTP)	WQ0014367002	No Discharge	-
2113	Upper Frio River - from a point 100 meters (110 yards) upstream of US 90 in Uvalde County to the confluence of the West Frio River and the East Frio River in Real County	Exceptional	Edwards Aquifer	Nueces River Authority (Leakey Regional WWTP)	WQ0015083001	No Discharge	-

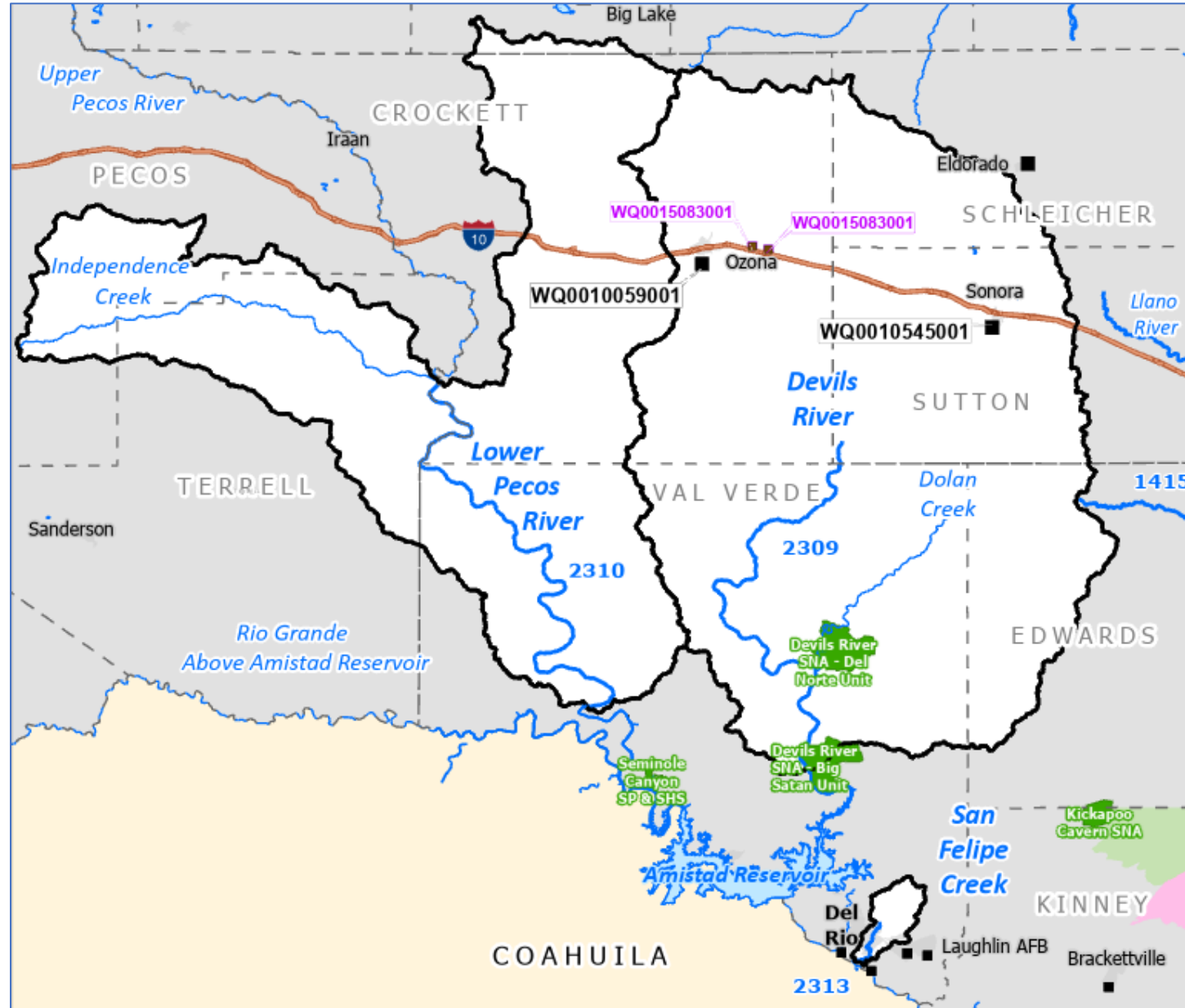
Map of Segment 1424 Watershed



Middle Concho/South Concho Watersheds: Segment 1424

Classified Segment ID, Name, Description		Aquatic Life Use	Permit Holder	Permit Number	Disposal Method	Nutrient Limits
1424	Middle Concho River - from a point 110 yards upstream of US 67 in Tom Green Co. to the confluence of Three Bluff Draw and Indian Creek on the Middle Concho River in Reagan Co.	High	City of Big Lake	WQ0010038001	Discharge	No
1424	South Concho River - from a point 2.5 mi downstream of FM 2335 in Tom Green Co. to the confluence of Bois d'Arc Draw on the South Concho River in Tom Green Co.	High	City of Eldorado	WQ0010165001	Discharge	No

Map of Segments 2309, 2310, and 2313 Watersheds



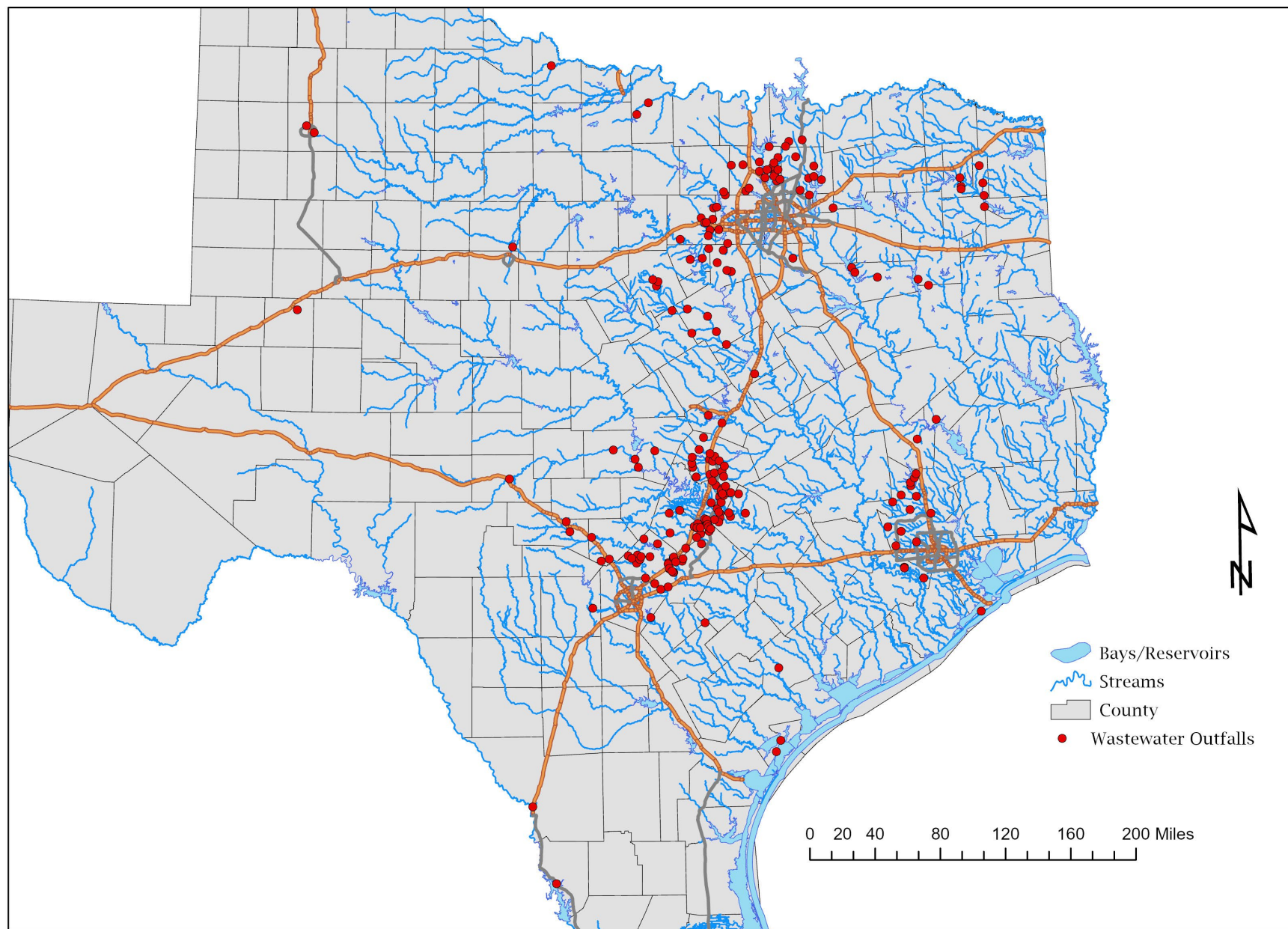
Middle Rio Grande Tributaries Watersheds: Segments 2309, 2310, 2313

2309	Devils River - from a point 0.4 mi downstream of the confluence of Little Satan Creek in Val Verde Co. to the confluence of Dry Devils River in Sutton Co.	Exceptional	City of Sonora	WQ0010545001	Discharge	No
			Crockett County WCID No. 1	WQ0010059001	Discharge	No
				WQ0010059003	No Discharge	-
			Platinum SA Prop.	WQ0014240001	No Discharge	-
2310	Lower Pecos River - from a point 0.4 mi downstream of the confluence of Painted Canyon in Val Verde Co. to a point immediately upstream of the confluence of Independence Creek in Crockett/Terrell Co.	High	-	-	-	-
2313	San Felipe Creek - from the confluence with the Rio Grande in Val Verde Co. to a point 2.5 mi upstream of US 90 in Val Verde Co.	High	-	-	-	-

Existing Permits with Nutrient Limits

- Statewide:
 - 199 issued permits with TP requirements
 - 167 with numeric limits
 - 32 with monitoring/reporting (M/R) requirements
 - permitted flow range: 0.01 – 100 MGD
 - range of TP limits: 0.15 – 3 mg/L
 - 15 issued permits with TN requirements
 - 9 with numeric limits (2 in estuarine settings)
 - 6 with M/R requirements (1 in estuarine setting)

Discharges With Total Phosphorus Requirement



Existing Permits with Nutrient Limits

- Pristine Streams Segments:
 - 8 of 19 issued permits with TP requirements
 - 7 with numeric limits
 - 1 with monitoring/reporting requirements
 - permitted flow range: 0.025 – 4 MGD
 - range of TP limits: 0.15 – 1 mg/L
 - 3 issued permits with TN requirements (2 with limits)
 - majority of permits in these segments are TLAPs (44)