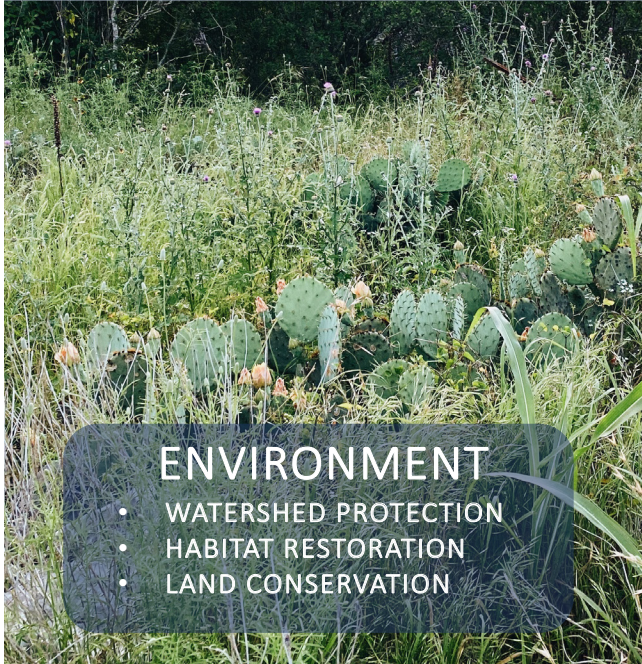


DRY CYPRESS CREEK TRAIL

Reinvestment in the Cypress Creek
Watershed Conservation Network



DRY CYPRESS CREEK TRAIL: REINVESTMENT IN CYPRESS CREEK WATERSHED CONSERVATION NETWORK



ENVIRONMENT

- WATERSHED PROTECTION
- HABITAT RESTORATION
- LAND CONSERVATION



COMMUNITY

- OPEN SPACE PRESERVE
- OUTDOOR RECREATION
- ARTS & SCIENCE EDUCATION



FINANCE

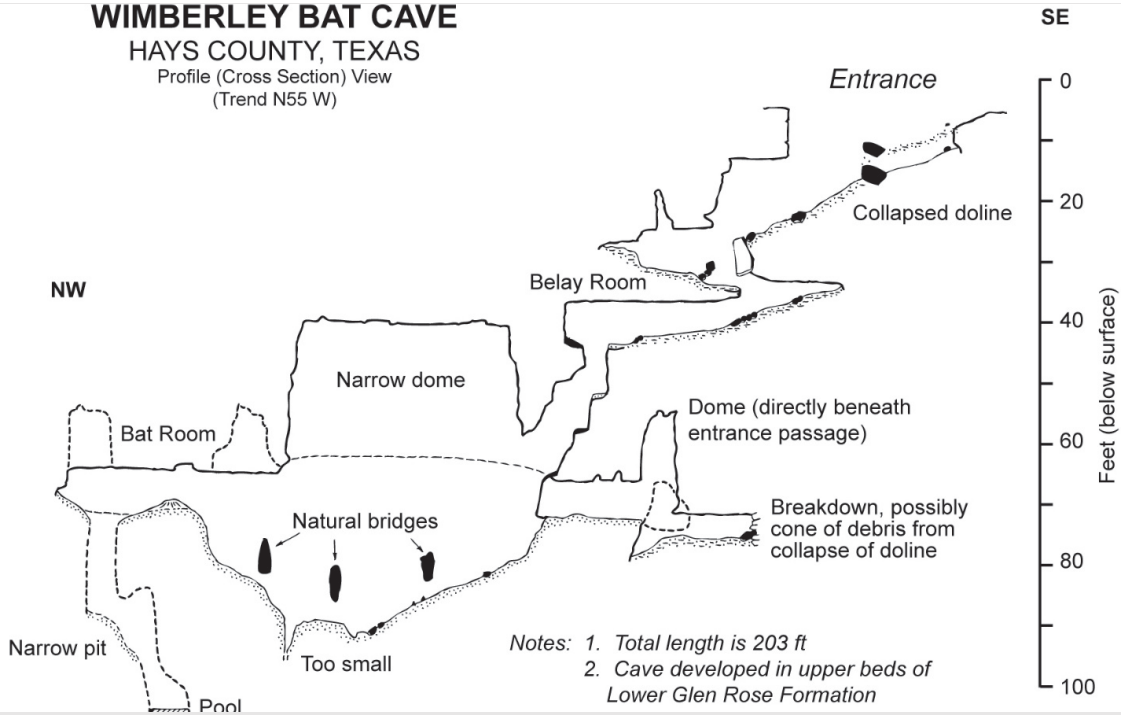
- PARTNERSHIP COLLABORATION
- ECONOMIC DEVELOPMENT
- INSPIRING STEWARDSHIP



WIMBERLEY BAT CAVE

HAYS COUNTY, TEXAS

Profile (Cross Section) View
(Trend N55 W)



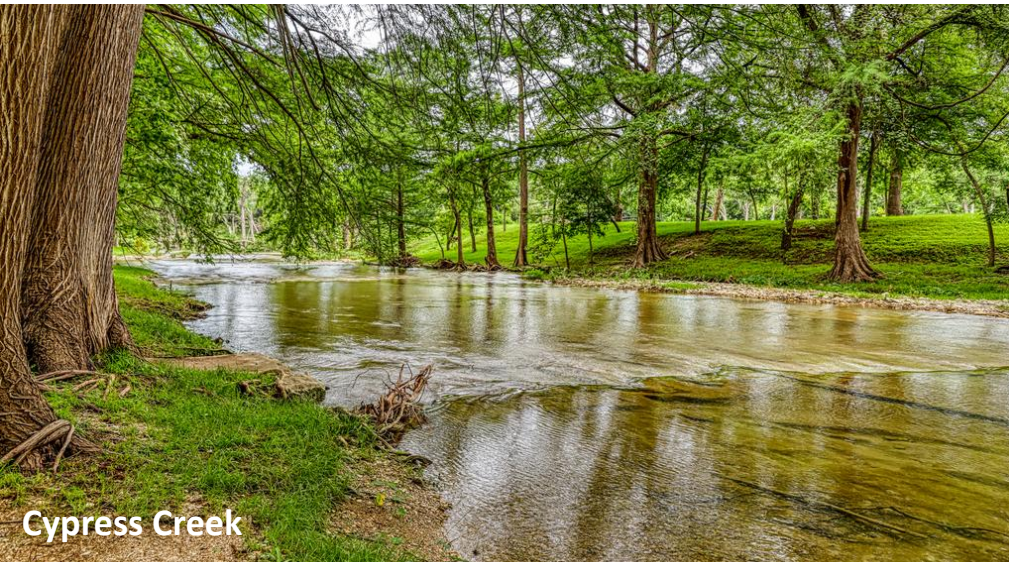
CONTEXT — A Watershed Under Pressure



Jacob's Well



Texas Hill Country Suburban Sprawl



Cypress Creek



Blue Hole

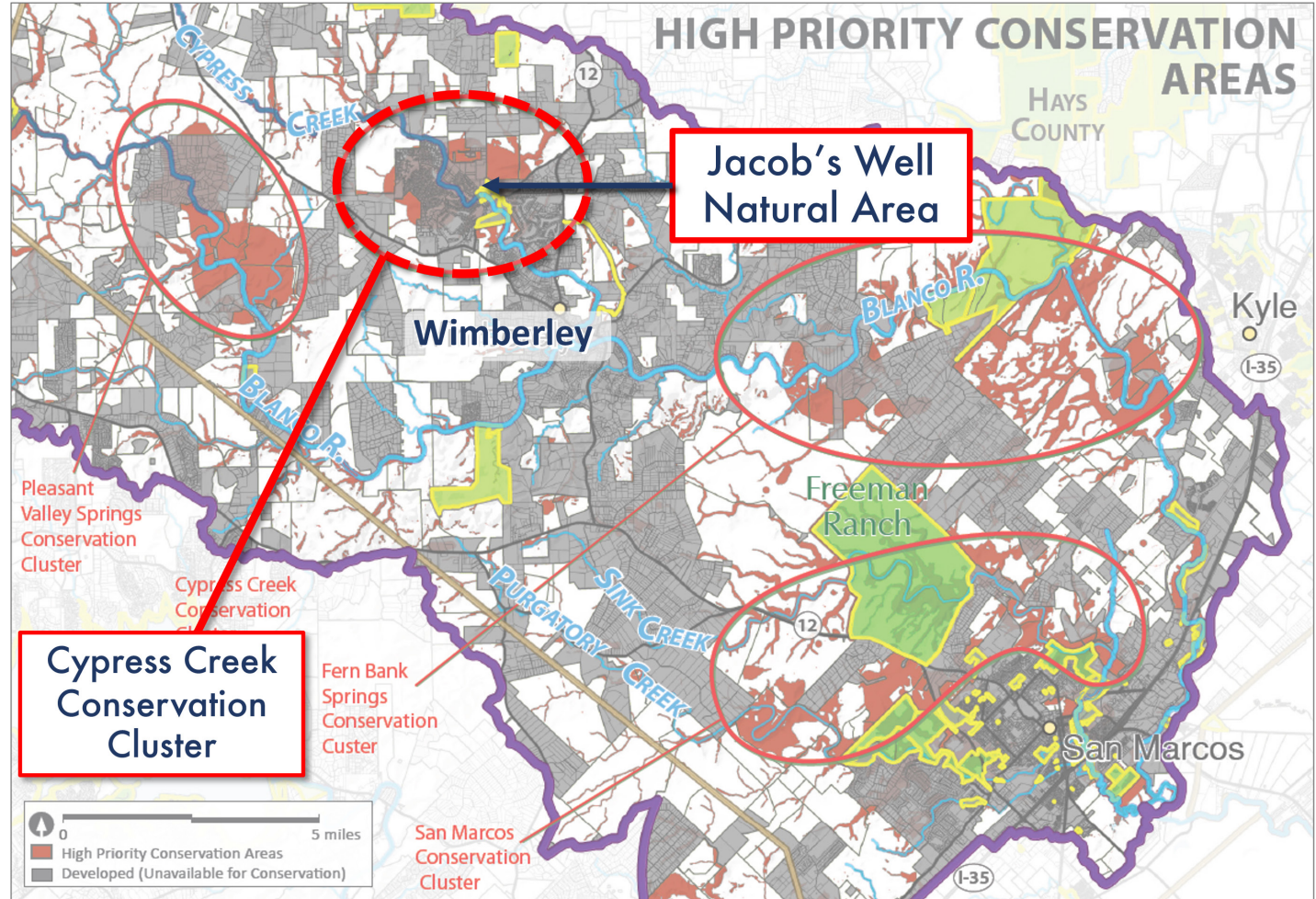
CONTEXT

High Priority Conservation Areas



BLANCO AND UPPER SAN MARCOS WATERSHED
STRATEGIC CONSERVATION PRIORITIZATION

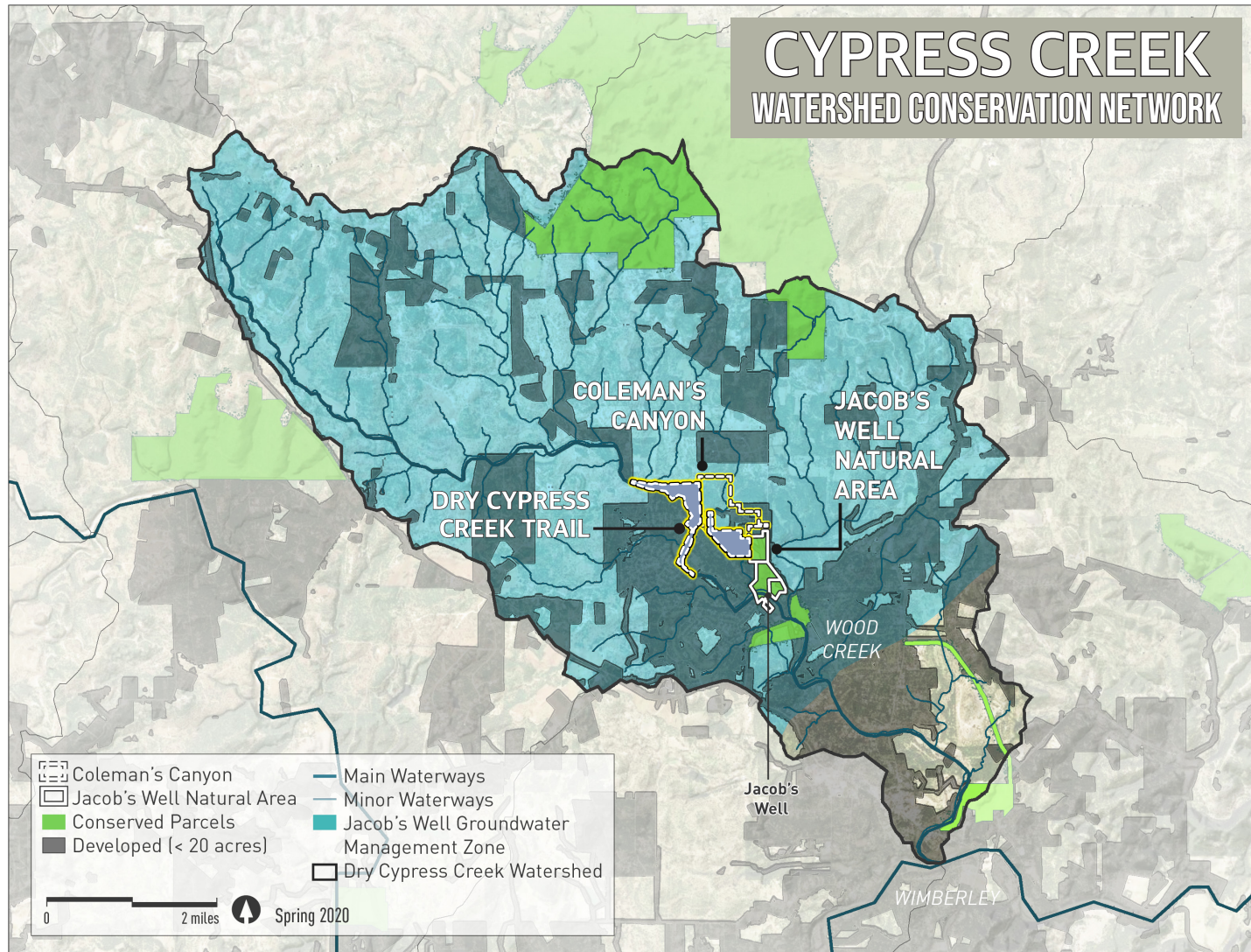
The Meadows Center for Water and the Environment, Texas State University
April 2017



CONTEXT

Watershed Development Pressure

- Aquifer Overdraft
- Urgent Timing
- Watershed Protection Plan



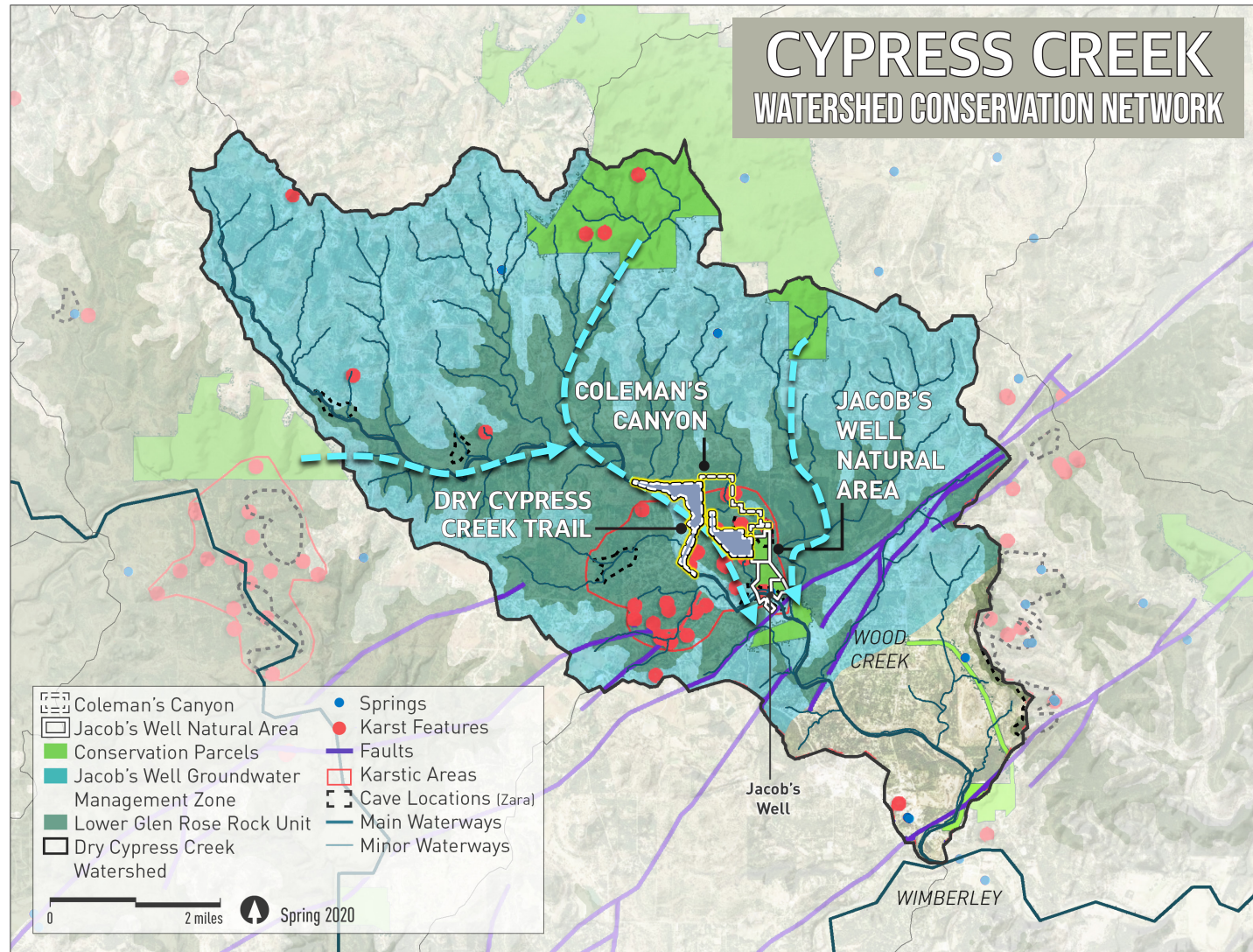
CONTEXT

Watershed Conservation Network

- Critical Groundwater Management Zone
- Enhance Aquifer Recharge
- Habitat Connectivity

Evaluation for the Development of a Jacob's Well Groundwater Management Zone in Hays County, Texas

Technical Report prepared for the Hays Trinity Groundwater Conservation District, Hays County, Texas
Report: 2019_05
July 2019





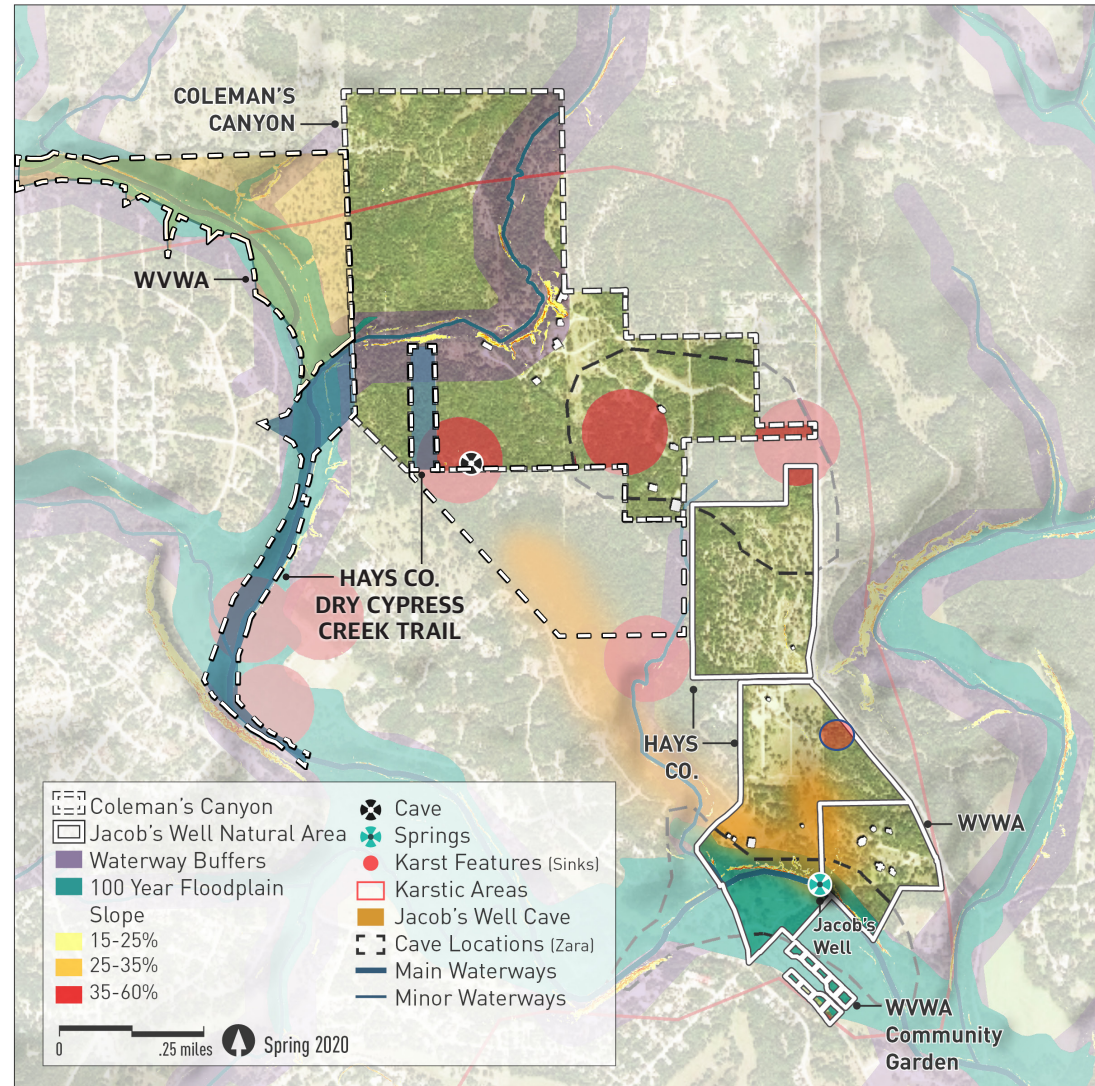
SITE ASSESSMENT



SITE ASSESSMENT

Water

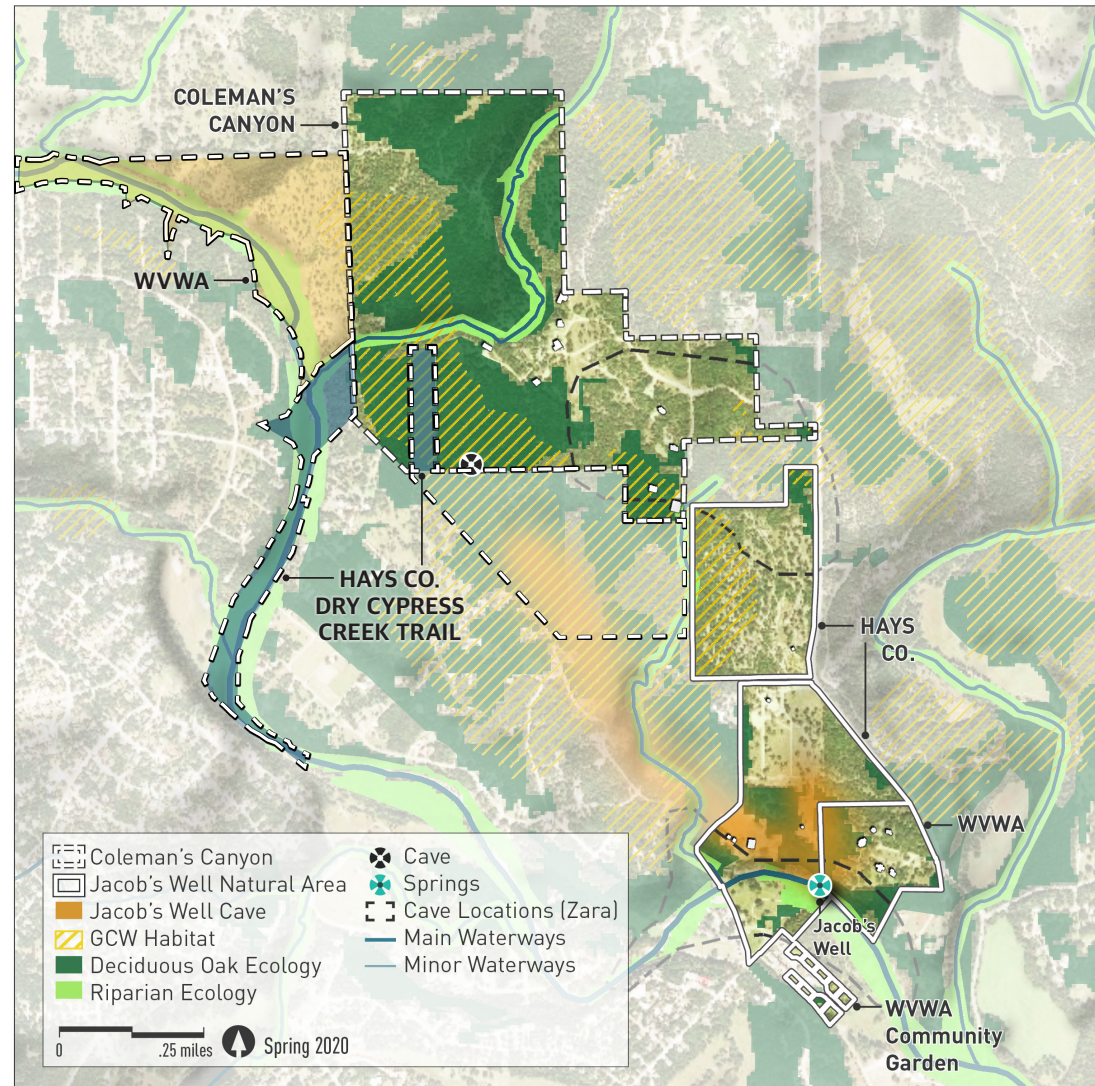
- Wimberley Bat Cave Karst/Recharge Area
- Critical Waterways & Water Quality Buffers
- Floodplain Riparian Restoration
- Steep Slopes



SITE ASSESSMENT

Natural Resources & Habitat

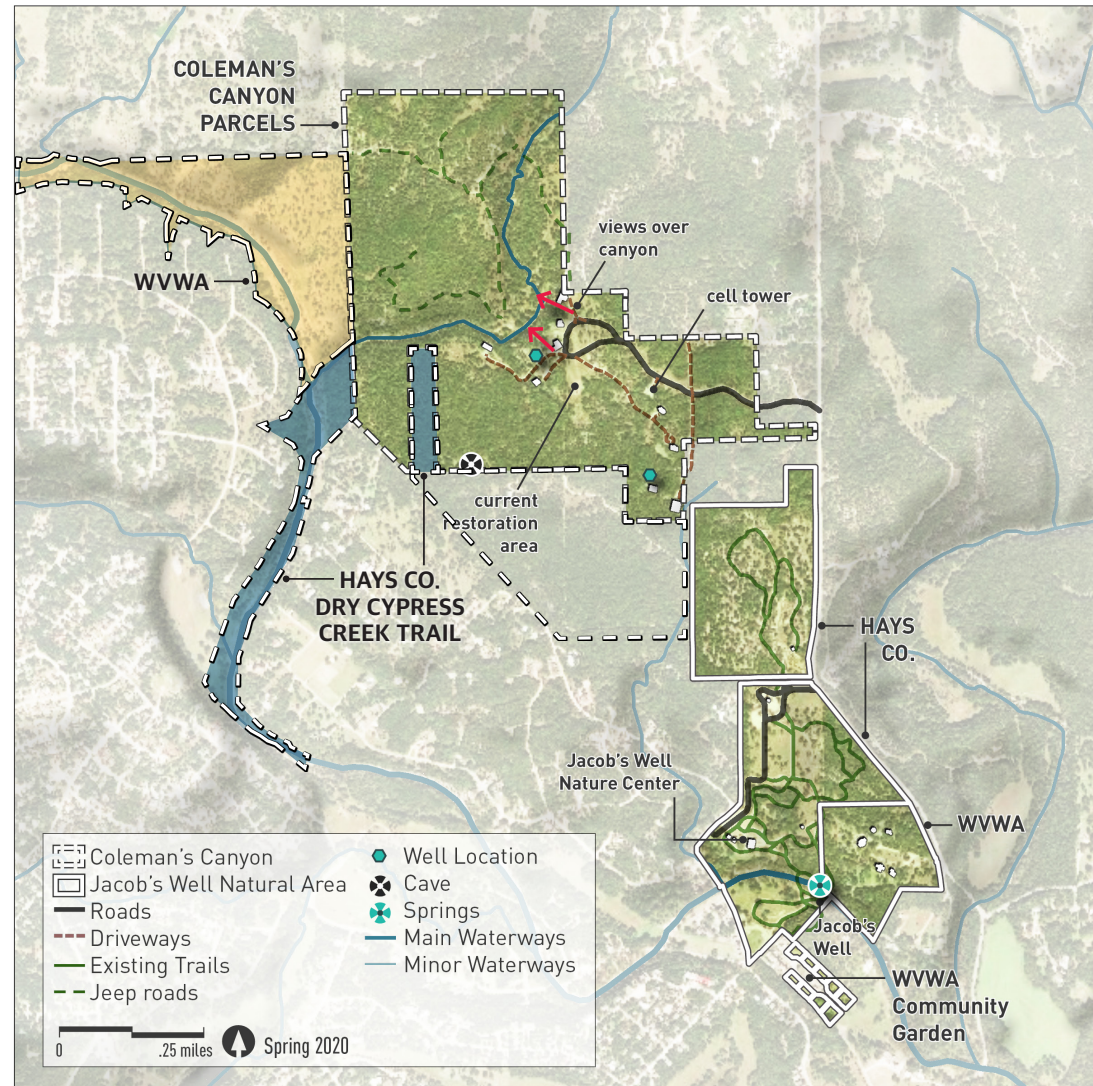
- Golden Cheeked Warbler
- Mexican Freetail Bats
- Salamanders & Amphipods in Bat Cave
- Deciduous Oak & Riparian Plant Communities
- Diverse Wildlife Habitat



SITE ASSESSMENT

Existing Open Space & Trails

- Access
- Infrastructure – wells, structures, cell tower
- Views Over Canyon
- Existing trails at Jacob's Well Natural Area
- Jacob's Well Nature Center



SITE POTENTIAL



Art Program in Nature



Camping & Cabins



Green Infrastructure – One Water Demonstration



Land Conservation & Ecological Health



Stewardship & Restoration



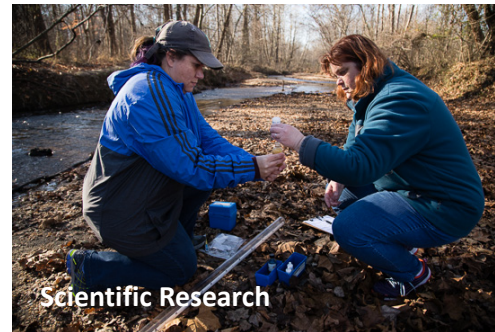
Recreation



Conservation & Wildlife Viewing



Environmental Education



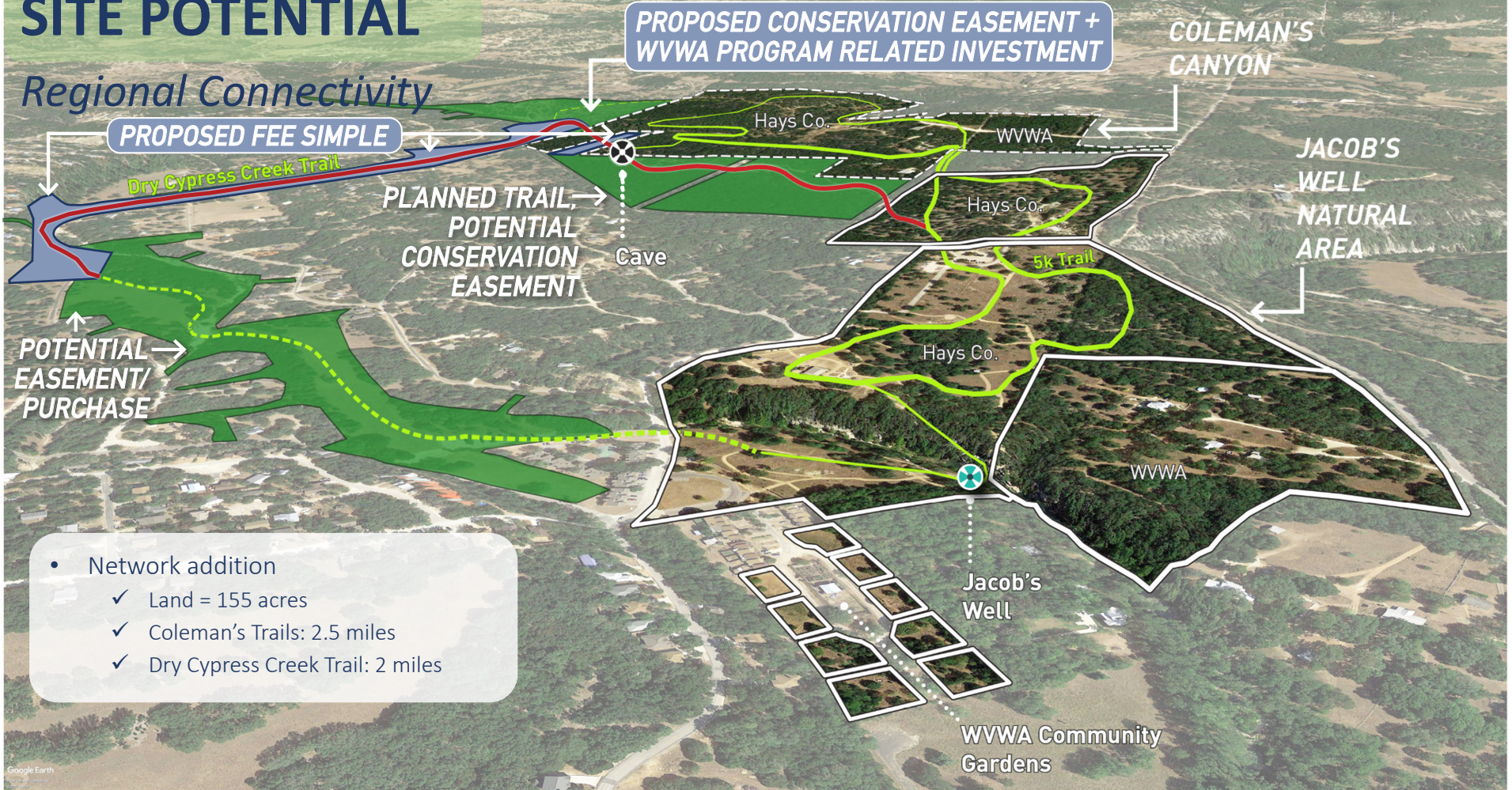
Scientific Research



TCC (Texas Conservation Corps)
Green Vocational Programs

SITE POTENTIAL

Regional Connectivity

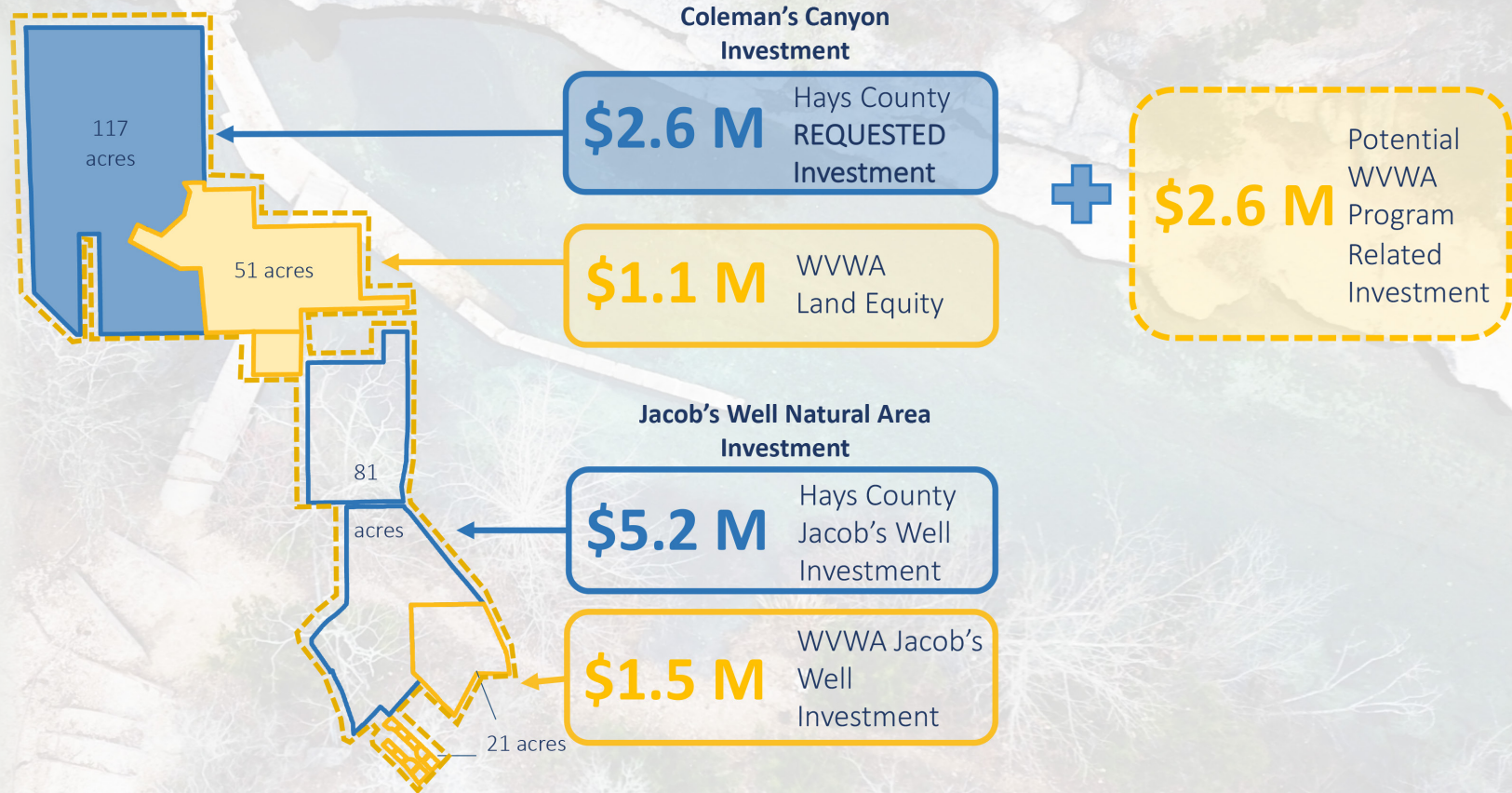


- Network addition
 - ✓ Land = 155 acres
 - ✓ Coleman's Trails: 2.5 miles
 - ✓ Dry Cypress Creek Trail: 2 miles

PENDING COLEMAN'S CANYON PRESERVE

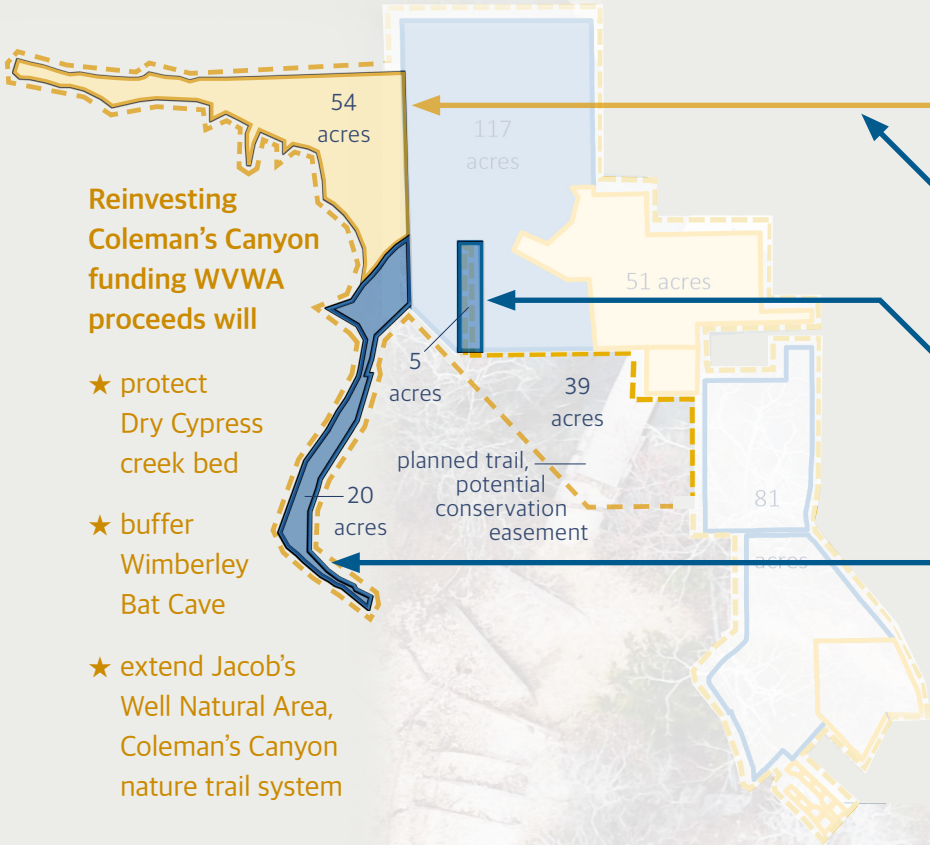
Awaiting Funding of First Round Project For Conservation Reinvestment

- ★ protect groundwater recharge
- ★ drive the local economy
- ★ create opportunities for the community to enjoy nature



LEVERAGING RESOURCES

Reinvested \$2.6 M First Round Funding of Coleman's Canyon Preserve



Reinvesting Coleman's Canyon funding WVWA proceeds will

- ★ protect Dry Cypress creek bed
- ★ buffer Wimberley Bat Cave
- ★ extend Jacob's Well Natural Area, Coleman's Canyon nature trail system

\$1.5 M WVWA Land Equity

\$0.8 M Hays County Requested Cnsv.Easement

\$0.2 M Hays County Requested Fee Simple

\$0.5 M Hays County Requested Fee Simple

\$1.5 M Hays County Total Requested Match Funding



\$1.1 M Potential WVWA Program Related Investment



Q & A